

# SHAFT POWER METER (SPM)

**Measurement / Performance Monitoring**



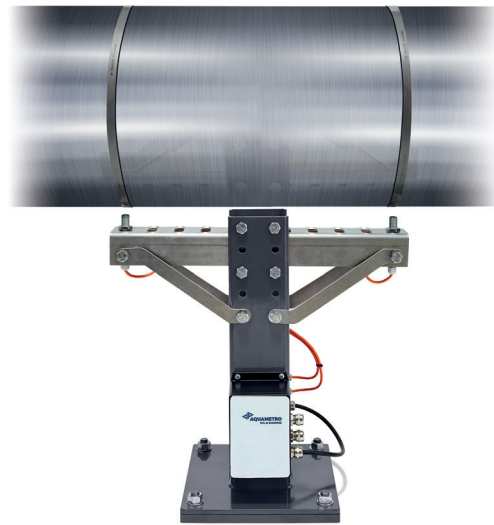
# SHAFT POWER METER (SPM)

## System for engine / ship performance & fuel / propulsion efficiency

The Shaft Power Meter is the key component for fuel performance system FPS 2.0.

The Shaft Power Meter is the cost effective solution when reliable shaft power measurement is required. The system is easy to install and requires no electronic parts on the shaft.

The system operates absolutely contact free.



### Features:

- » RPM, torque and power signals
- » Reliable data
- » Fuel / propulsion efficiency
- » Key component for fuel performance system FPS 2.0
- » PLC based system with web based visualization via Ethernet
- » Data storage on SD card
- » Easy installation
- » Maintenance free

### Benefits:

- » Self installation possible
- » Cost effective
- » Plug & play by crew
- » No installation on shaft
- » Basic for every fuel performance system
- » Easy to read trend curves for performance evaluation
- » Steady observation of hull and propeller efficiency possible

# FUNCTION

Because of non electronic parts on the shaft the system is maintenance free and absolutely robust and reliable.

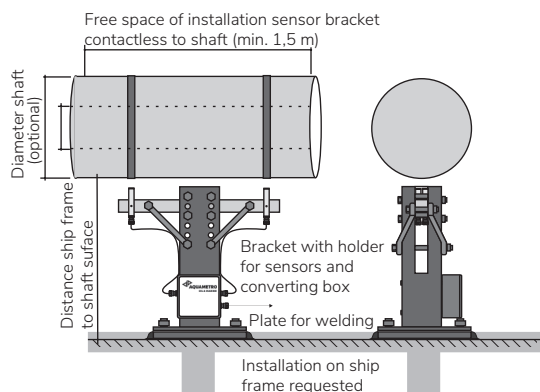
The Shaft Power Meter can be extended with the fuel performance system (FPS).

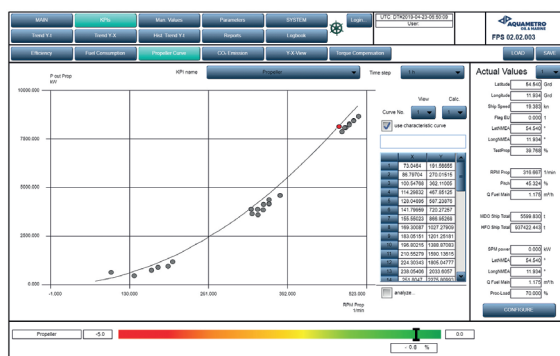
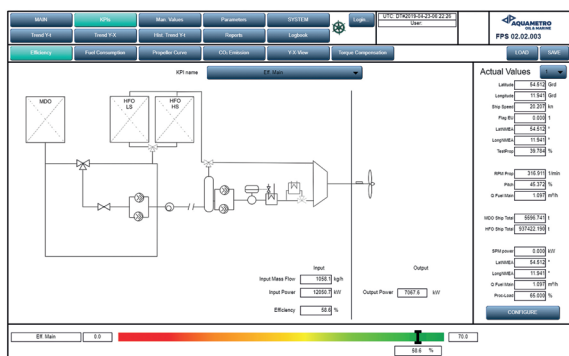
As a feature of the fuel performance system - FPS 2.0 - it can calculate all important data as well as KPI values to optimize your ship performance and fuel efficiency and ship propulsion performance.

The connection to any ships automation system can be done easily with analog signals (0 / 4-20 mA). Available outputs are: RPM, Torque (kNm) and Shaftpower (kW) through analog or / and RS485 NMEA signal interface or Modbus Slave.

- » No electronic parts on the shaft
- » No wear and tear
- » Easy to install system
- » Incl. 0 / 4-20 mA output for rpm, torque & power
- » Optional web touchscreen display
- » Easy expandable to a Fuel Performance System (FPS)
- » LCD remote display
- » Web based configuration / visualization via Ethernet connection

# SYSTEM OVERVIEW





## Specifications

- » Power supply: 24 VDC
- » Power consumption: >2 A
- » Min / max shaft diameter: 200 / 1200 mm
- » Max speed of shaft: 800 rpm

Shaft Power Meter is part of the Fuel Performance System.  
For more information see the FPS brochure.



[www.aquametro-oil-marine.com](http://www.aquametro-oil-marine.com)

**Aquametro Oil & Marine AG**  
CH-4106 Therwil, Switzerland  
[info@aquametro-oil-marine.com](mailto:info@aquametro-oil-marine.com)  
Phone +41 61 725 44 00

**Aquametro Oil & Marine GmbH**  
DE-18119 Rostock, Germany  
[info@aquametro-oil-marine.com](mailto:info@aquametro-oil-marine.com)  
Phone +49 381 382 530 00