

SHIPPING & OFFSHORE

Recycling & Waste Solutions



MIXED WASTE COMPACTOR MODEL XP100S & XP200S

Like their fellow product, the XP100S and XP200S are tough, durable waste compactors, capable of handling all forms of general waste, including fluids and hazardous waste.

You also reduce the number of bins and collections by 80%, reducing the cost and improving the internal logistics and productivity of your organisation.

What makes the XP100S and XP200S special, is that they are both stainless-steel machines, which makes them optimal for environments like shipping and Offshore, where specialized equipment is needed, due to the exposure of different elements.



Technical Specifications	XP100S LC / XP200S LC
Weight of full bag	< 50 kg / 60 kg
Bag Dimensions: H x Ø (mm)	600 x 450 / 600 x 570
Machine Size: H x W x D (mm)	1970 x 670 x 704 / 2025 x 810 x 779
Weight	150 kg
Noise level	< 70 dB (A)
Degree of Compression	< 90%
Pressure	1500 kg at 5 bar
Approvals	CE, AS/NZ 4024.1

MIXED WASTE COMPACTOR MODEL XP300

The Mil-tec XP300 waste compactor is an extremely flexible and suitable waste solution for the shipping and offshore sector.

The fixed frame unit and sliding wagon allows the XP300 to be securely bolted in place making it ideal for the environment found on ships and oil-platforms.

The Mil-tec XP300 waste compactor is powered by compressed air, either directly from an existing air-line or from a compressor supplied by Mil-tec. This means that you are free of both electrical and hydraulic components, minimizing the risk of fire and completely eliminating the risk of oil contamination.



Technical Specifications	XP300
Weight of full bag	< 60 kg
Bag Dimensions: H x Ø (mm)	600 x 570
Machine Size: H x W x D (mm)	2025 x 810 x 779
Weight	150 kg
Noise level	< 70 dB (A)
Degree of Compression	< 90%
Pressure	1500 kg at 5 bar
Approvals	CE, AS/NZ 4024.1





STAINLESS STEEL WASTE BALER MODEL 2205S

The Mil-tec 2205S is a stainless steel baler suitable for cardboard and plastic. The stainless steel design and small floor space footprint makes it suitable for hygienic environments such as industrial kitchens.

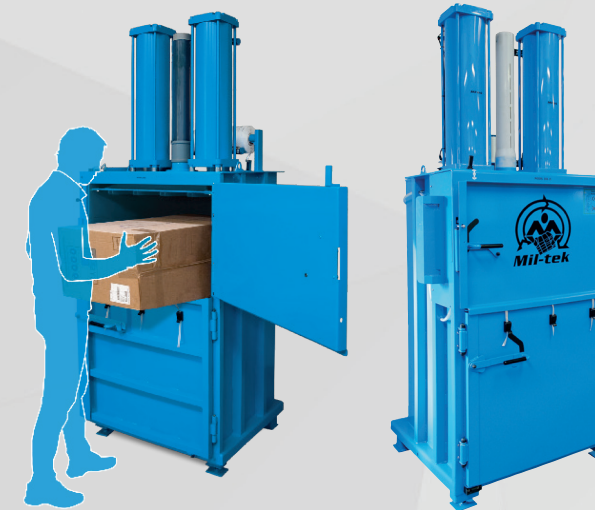
The stainless steel allows for 2205S baler to be easily cleaned and maintained, while withstanding the chronic rust and corrosion that affects hydraulic and non-stainless steel machines.

205 and 306 Offshore are different models, specifically designed to operate in shipping and offshore environments, such as cruise-ships, platforms and rigs.

Technical Specifications	2205S
Bale Weight	Plastic: < 120 kg Cardboard: < 60 kg
Bale Size H x W x D (mm)	960 x 650 x 450
Door Opening H x W x D (mm)	475 x 650 x 415
Machine Size: H x W x D (mm)	2260 x 775 x 540
Weight	225 kg
Noise level	< 70 dB (A)
Pressing cycle time (sec.)	7-15
Degree of Compression	85-90%
Pressure	2250 kg at 8 bar
Approvals	CE, EN16500



Technical Specifications	205 Offshore
Bale Weight	Plastic: < 100 kg Cardboard: < 50 kg
Bale Size H x W x D (mm)	1010 x 650 x 450
Door Opening H x W x D (mm)	575 x 650 x 415
Machine Size: H x W x D (mm)	2370 x 745 x 540
Weight	Approx 224 kg
Noise level	< 70 dB (A)
Pressing cycle time (sec.)	55
Degree of Compression	85-90%
Pressure	2250 kg at 8 bar
Approvals	CE



Technical Specifications	306 Offshore
Bale Weight	Plastic: < 225 kg Cardboard: < 125 kg
Bale Size H x W x D (mm)	875 x 890 x 730
Door Opening H x W x D (mm)	480 x 890 x 700
Machine Size: H x W x D (mm)	2490 x 1095 x 940
Weight	575 kg
Noise level	< 70 dB (A)
Pressing cycle time (sec.)	10-20
Degree of Compression	85-90%
Pressure	4500 kg at 8 bar
Approvals	CE





STAINLESS STEEL CAN CRUSHER MODEL 2101S

The Mil-tek 2101S Stainless Steel Can Crusher is a small footprint can compactor capable of crushing and compacting tins, cans and drums up to 30 liters in size. With a footprint of less than 0.27 m², the 2101S Can Crusher is perfectly suited to locations and workplaces where space is limited and can be seamlessly installed without intruding upon the existing setup.

The stainless steel design makes it significantly more durable than other can presses and makes it suitable for almost any form of metal, non-aerosol containers. Additionally, the stainless steel is easier to clean and easier to maintain and is a boon in the shipping sector, given its higher resistance to watery fluids.



Technical Specifications	2101S
Bale Weight	< 30 L.
Capacity	Cans: < 30 L.
Door Opening H x W x D (mm)	490 x 405x 400
Machine Size: H x W x D (mm)	2005 x 525 x 510
Weight	125 kg
Noise level	< 70 dB (A)
Pressing cycle time (sec.)	10-20
Degree of Compression	85-90%
Pressure	2250 kg at 8 bar
Approvals	CE



MIL-TEK GLASS CRUSHER MODEL GC100

The GC100 Glass Crusher is a viable option for the shipping and cruise-ship environment, when it comes to disposal of bottles.

The GC100 can crush up to 100 bottles in just 2 minutes. Bottles are fed into an opening where the glass is crushed and collected in a box within the machine itself. With a capacity of up to 95 bottles, the crushed glass or 'cullet' is 80% smaller in volume and recycle-ready.

The GC100 Glass Crusher is the smallest machine in our line-up, so if you need something with a bigger capacity, like its sibling GC100T which uses a 120 litre bin as the receptacle, we got you covered.



Technical Specifications	GC100
Capacity	18 kg / 95 bottles
Machine Size: H x W x D (mm)	855 x 600 x 590
Weight	106 kg
Noise level	68 dB (A)
Pressing cycle time (sec.)	1
Degree of Compression	80%
Approvals	ISO9001 & CE



Minimize your waste

© 2021 Mil-tek A/S. All Rights Reserved.

Mil-tek, Miltek and Mil-tek logo is registered trademarks of Mil-tek Danmark A/S.