



**WE ADVANCE SAFETY, SECURING
PEOPLE AND PROPERTY.**

By engineering unique innovations,
and offering the most reliable and efficient solutions

About Matre Maskin

- Matre is a privately owned company out of Norway.
- The company was established in 1953.
- Certified company with an implemented quality management system According to ISO 9001:2015.
- Since early 1980's Matre has been a world leading manufacturer of foam proportioning equipment for the offshore – and marine industry
- Since 1991 Matre have delivered Firefighting solutions to various helicopter platform applications. (Matre DIFFS)
- Main office and production premises are located in Norway. Sales representatives in US and Russia.



Facilities & People

All production and testing are carried out in our location in Norway.

In all 4100m²

- Offices*
- Production*
- Test center.*
- Machining hall.*



Our service and products used in various of segments

We deliver to your segment



OFFSHORE

[Read more](#)



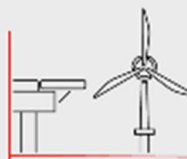
MARITIME

[Read more](#)



YACHT

[Read more](#)



RENEWABLE

[Read more](#)



ONSHORE

[Read more](#)

Matre is a well renowned provider of Deck Integrated Fire Fighting Systems for the global maritime and offshore industry as well as onshore sector.

We advance Safety, Securing People and Property.

By engineering unique innovation, and offering the most reliable and efficient solutions.

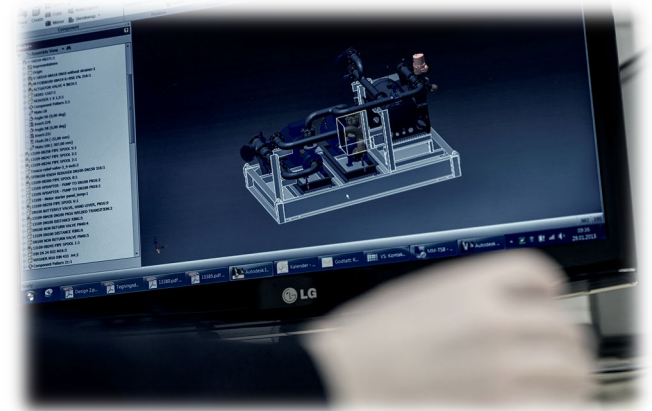


Matre DIFFS for Yacht vessels

Matre Maskin AS has over the years supplied many DIFF System for the yacht market.

ABOUT DIFFS :

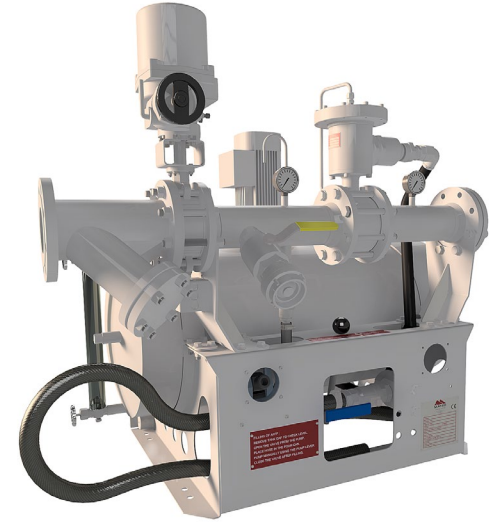
- Reliable and efficient fire fighting system
- Extinguishing any fire at helideck within 15 seconds
- Activated by one push at the “Start” button
- No need for trained personnel to operate the system
- In case of emergency; personnel can be used for rescue
- Helideck can be entered shortly after system release
- Automatic drainage of the system
- Minimal and easy maintenance



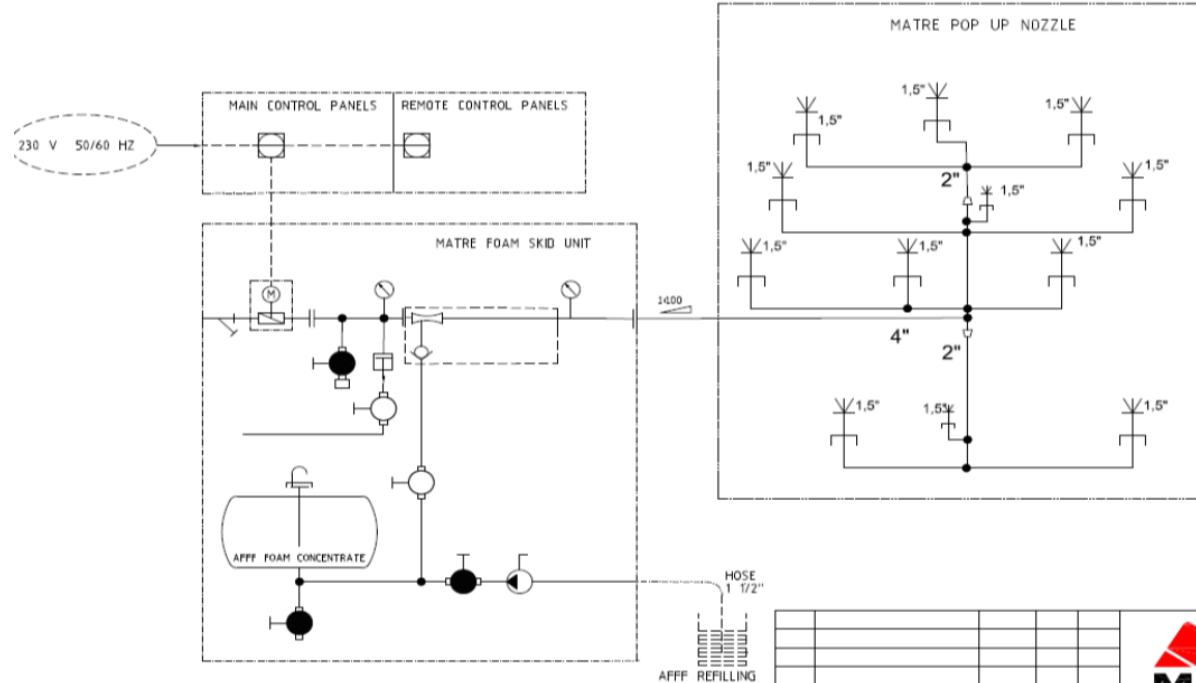
Matre DIFFS for Yacht consists of the following main components:

Matre Foam Skid:

- Strainer at skid inlet
- Butterfly valve with el actuator for activation
- Flushing Connection
- Matre Foam proportioner
- Foam Tank
- Automatic Drain Valve
- Painting (Optional)
- Matre Pop-Up Nozzles at Helipac
- Main Control Panel
- Remote control panels



System Overview (Typical)



01	IBD	15,06,17	B,K	T,H
Rev.	Issued for	Date	Design	Approved

**MATRE DIFFS WITH INDUCTOR
PROPORTIONER
FOR HELIDECK, P&ID**



This drawing is the property of Matre Maskin AS.
Any use of the drawing or handover to third party is illegal without Matre Maskin's permission

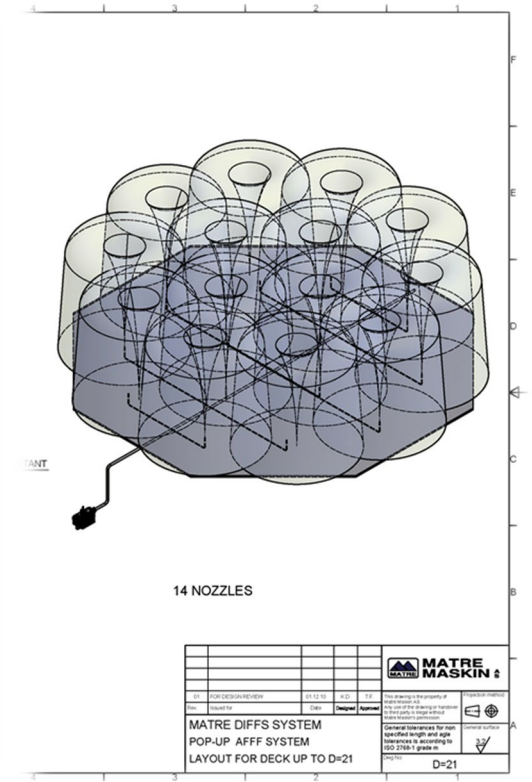
Draw No: 20170410-XB-001

Matre Pop-Up Nozzle

Matre Pop-Up Nozzle
Both horizontal and vertical spray
Minimum water pressure at nozzle 4bar.
Coverage: Horizontal \varnothing 7m Vertical 6 m



DIFFS System on Super Yacht Vessel.



YACHT DIFFS REFERENCES



Matre Deck Foam System

Matre have for more than 25 year been delivering various loose firefighting equipment as well as Deck Foam System to be used in car ferries and passenger vessels operating at the west coast of Norway.

Matre Deck Foam System for car ferries consists of:

- Sea Water Pump
 - Foam Pump
 - Foam tank
 - Matre Balanced pressure foam proportioner
 - Butterfly valves with electric actuator
 - Matre Flexi nozzles and Matre Water Curtain Nozzles
 - Control Panels
-
- Design in accordance to applicable standards and regulations
 - Hydraulic calculation for the system
 - Equipment delivery
 - Start up service and support
 - Lifetime service



Matre Deck Foam System

General System Description:

The system is designed to cover the entire vehicle parking area, which is divided into three or four zones depending on the size of vessel

Zone 1 is characterized as dangerous cargo area. This requires a minimum foam application rate of 10 l/m²/min.

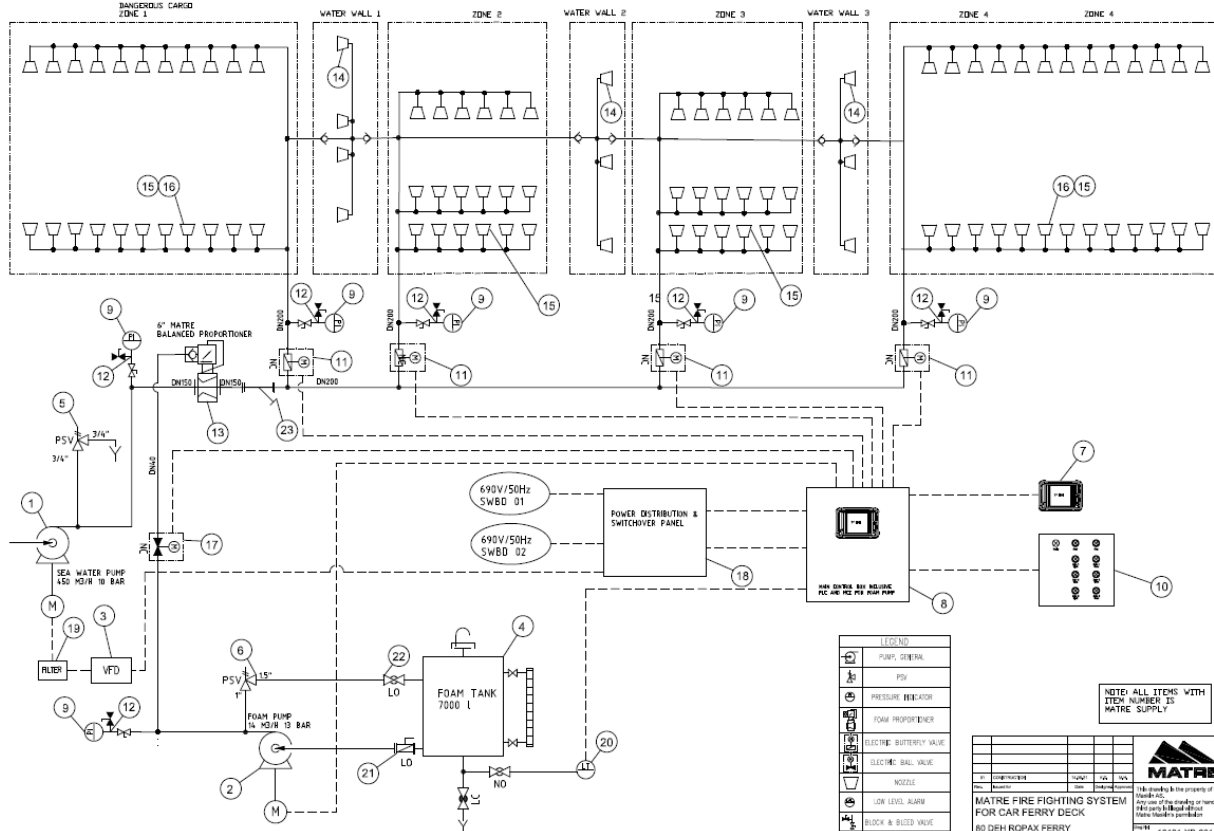
Zones 2,3 and 4 is defined as the private car area. The minimum required foam application rate in these zones are 6.5 l/m²/min. Capacity of the foam tank is sufficient for minimum 30 minutes of foam for the zone with the largest amount of coverage required. The system can be operated from the following locations:

- - Touch panel at the bridge.
- - Touch Panel at main control cabinet.
- - Remote Control Panel at deck, with push buttons and indication lamps.



Matre Deck Foam System

P&ID Typical:



Matre Deck Foam System

- Design in accordance to applicable standards and regulations.
- Hydraulic calculation for the system
- Equipment delivery
- Start up service and support
- Lifetime service



Electrical Ferry «Kommandøren» Fjord 1

Matre Flexi Nozzle

Matre Flexi Nozzle

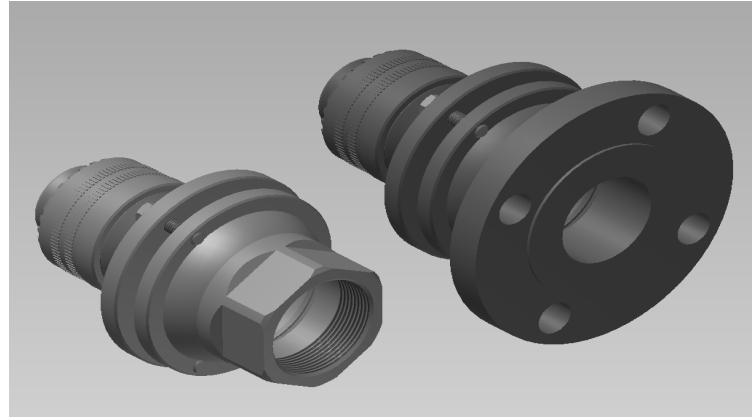
Matre Flexi Nozzle is a high capacity deluge nozzle. Both water capacity, spread angle and jet direction can be adjusted.

- Matre Flexi Nozzle is used when a specific area has to be covered like:
 - Car deck on a ferry
 - Tank top
 - Well head area etc.

Our Flexi Nozzles are in size 1 1/4" to 4" with flow range from approx. 200 l/min. to 6000 l/min. These nozzles have adjustable direction, spread angle and capacity.



Matre Flexi Nozzle



FERRY REFERENCES



MATRE Service

Matre has service partners located in strategic areas ready to assist customers worldwide.

Service engineers from Matre take on:

- Installation of Matre Systems / Equipment
- Commissioning of Matre Systems / Equipment
- Maintenance of Matre systems and equipment
- Trouble shooting
- Modification of existing Matre systems (example: from 1% to 3% foam insertion)

