

Sormec Company Presentation

We lift your ideas



About Us

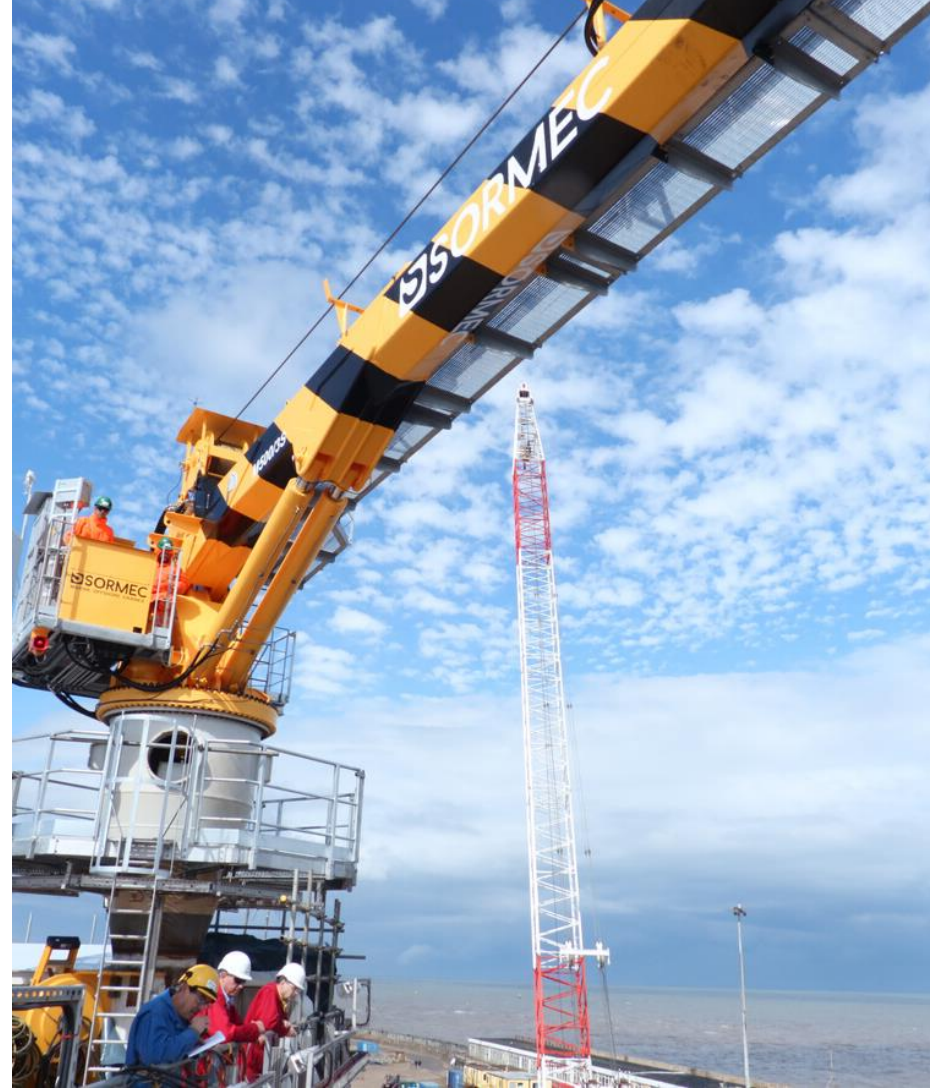






Raising to new heights

SORMEC Marine and Offshore Cranes , manufactures hydraulic lifting systems for ships, oceanographic vessels, scientific vessels, oil rigs, wind farms, Navy vessels, supply vessels, barges, and provides services for maintenance, upgrading and spares as per Client's needs.





Our History

- SORMEC was established in 1989 in Alcamo, western Sicily, as a family company. At the outset, the company targeted fishing boats.
- Thanks to the experience acquired in the hydraulic lifting field since 1980 and care of details in Design, Engineering, Construction and After-Sales Service of marine cranes, Sormec has gained a prominent position in marine equipment manufacturing.
- Today, Sormec can provide marine and offshore cranes (stiff boom, telescopic, knuckle, elbow, foldable cranes, a-frame cranes, lattice boom cranes, hatch cover gantry cranes, removable cranes, low magnetic signature cranes, ammunition cranes) winches, shell doors.



Headquarters - ALCAMO (Sicily-Italy)

Site Area	8000 mq
Area Covered By Workshops	5000 mq
Storage Area	500 mq
Test benches	n° 5 off

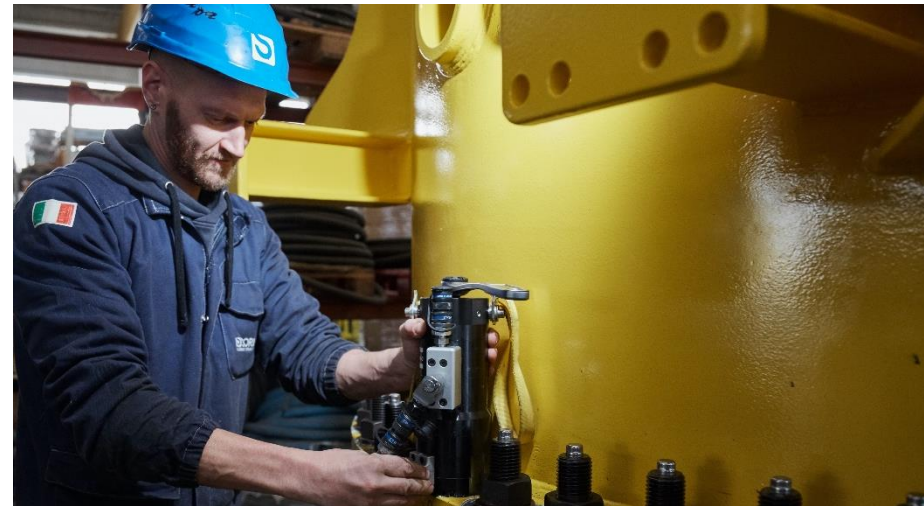


Second facility - PARTINICO (Sicily-Italy)

Site Area	12000 mq
Area Covered By Workshops	6000 mq
Storage Area	500 mq
Test benches	n° 3 off
	the biggest capable of 12.000tonm

Our strength points

- Multi decennial experience
- 100% in house production
- Innovative design via research and development
- Flexible and efficient production and management system
- Complete product line in house
- Customer service all over the world
- Flexibility in design, manufacturing and production.



The Company goals are

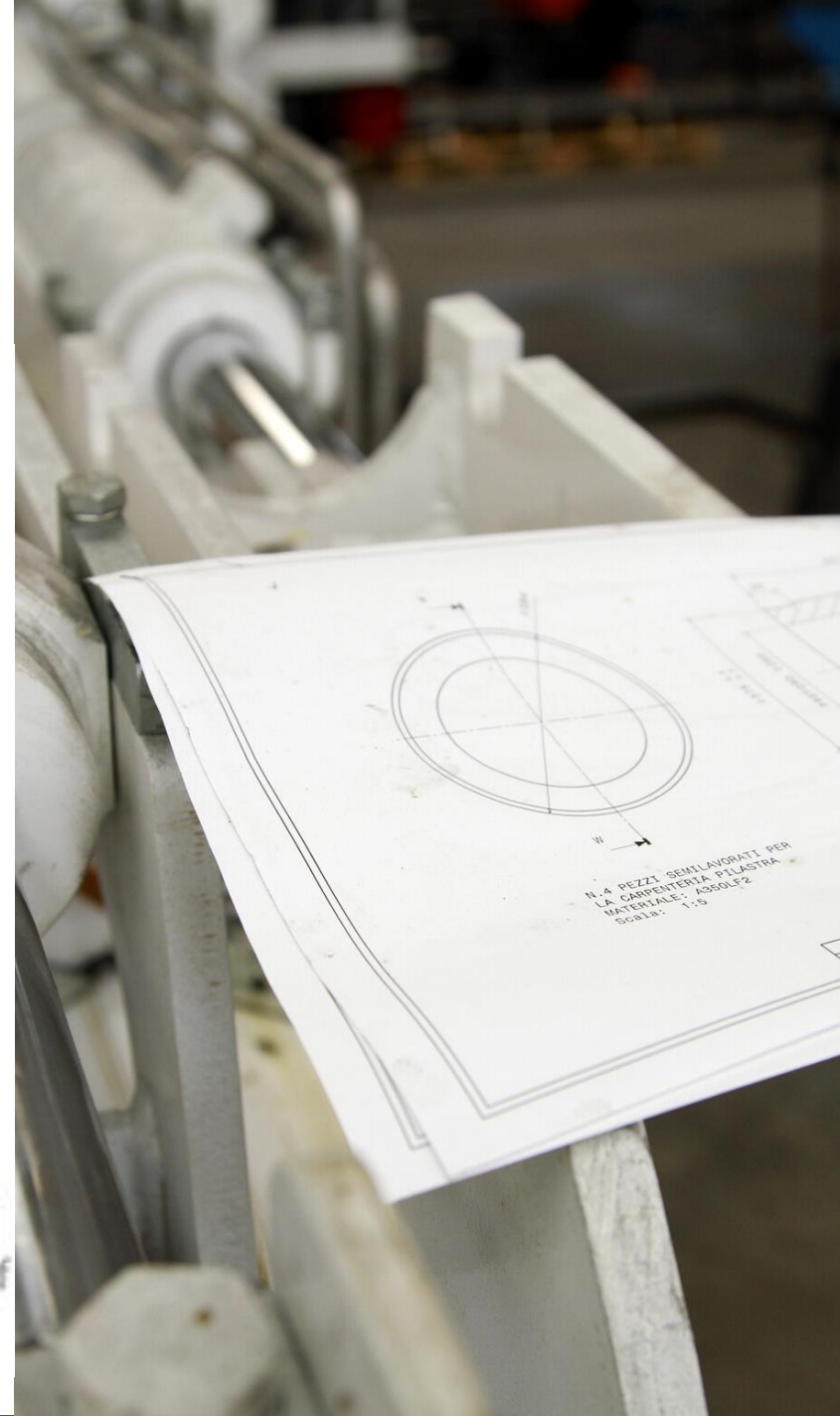
To provide reliable, innovative and high quality

To achieve total customer satisfaction

to Support the customer with a high level after-sales service

to Increase all the business resources constantly

to Ensure the professional growth and the comfort of Sormec team



How we work

Quality as standard



We don't work with sub-contractors, **we make everything in our workshops** and this means that we can control the whole production process, making sure of the highest quality. SORMEC has undertaken a documented process of quality levels, in which **Certification Authorities**, such as **R.I.NA., LRS, DNV, BV, ABS, GL, CCS, RMRS**, have been formally involved.

Thanks to this control process, which is revised and renewed every year, development and progress are constantly under care and attention.

OUR CERTIFICATIONS
ISO 9001:2015 ISO 14001:2015
UNI EN ISO 3834-2:2006
API-2C - Achilles JQS

Our Main Customers



Indian Coast Guard



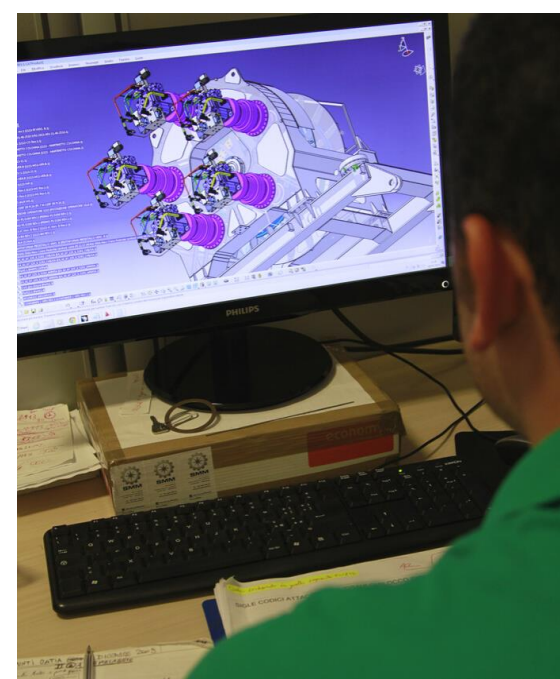
Move worldwide at seven seas

The constant growth is a significant result from a successful trade policy. **SORMEC** has got a network of agents around the world and customer bases in **all corners of the globe.**

Trade relations have, over time, gradually extended beyond national borders, allocating conducts business in **Russia, China, United Arab Emirates, Mexico, Columbia, Netherlands, Croatia, Spain, Singapore, Bangladesh, Norway, Denmark and India.**

You choose We commit

In order to meet the client's specific demands, the cranes models are duly studied for every specific request: every SORMEC crane is *taylor-made*, respecting all customer's technical requests. Engineering expertise and the use of sophisticated design software, allow SORMEC crane to succeed in *the most complex engineering challenges*.





Lift your business with our product range

SORMEC marine and offshore cranes can supply a *complete customized range of cranes in order to meet all kind of requests. The product range extends from small cargo-handling cranes of 10 tm to 10.000 tm offshore cranes. Each crane is suitable for general cargo handling, service and offshore applications. It also may be certified, upon additional specific request, by all the main certification authorities.*

Offshore technology

In operation on *offshore installations worldwide*, **SORMEC cranes** are configured to meet each client's specific needs: dedicated features make the cranes suitable for every application. The company manufactures both *diesel-hydraulic and electro-hydraulic systems*.

Internal mechanical, electrical and hydraulic engineers are constantly pioneering new technologies, making **SORMEC Offshore cranes** a good results in stability, reliability, performance, durability and safety.

SORMEC can supply systems like *AOPS (Automatic Overload Protection System)*, *MOPS (Manual Overload Protection System)* and *AHC (Active heave compensation system)* in full accordance with **EN13852**.



Our product range

SA Series

The SA series is a fully hydraulic Stiff - boom Marine Crane on slewing bearings driven by hydraulic motors, with capacities from 10 to 6000 metric tons.



TL Series

TL series is a fully hydraulic Telescopic - boom Marine Crane on slewing bearings.

The lifting capacity extends from 10 up to 4500 metrical tons.

Due to the telescopic boom configuration, the crane in stored position occupies a compact space.



KN Series

KN series is a fully hydraulic Knuckle - Telescopic - boom Marine Crane on slewing bearings, from 10 to 1500 metrical tons. Thanks to the double boom articulation and the telescopic configuration, the crane occupies a very reduced space in stored position.



EL Series

EL series is a fully hydraulic Elbow Knuckle – boom Marine Crane on slewing bearings, from 40 to 8000-10.000 metrical tons.



TR Series

TR is the lattice boom cranes line that can be electro-hydraulic, diesel hydraulic and fully electric driven. They are capable to lift from 10 to 250 tons with a working radius up to 60 m and can be produced to safely operate in hazardous areas. These cranes are typically used on offshore applications where the combination of high loads and big working radiuses is needed.



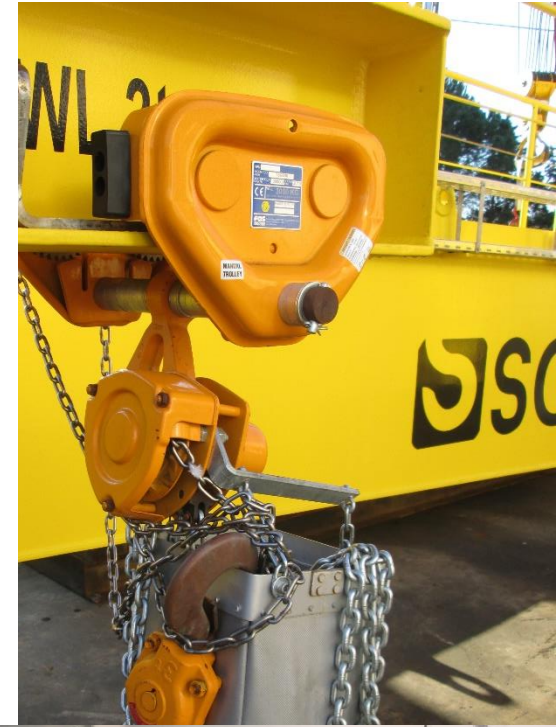
FB Series

FB series is a fully hydraulic Foldable Knuckle – Telescopic – boom Marine Crane on pinion and rack or on slewing bearings, from 5 to 450 metrical tons. The crane is designed for installation in reduced working areas.



JB Series

JB series can be both electrically or hydraulically driven. The design is fully tailored and in this sense SORMEC develops the necessary solution for the application. Lifting capability can go up to 40tons and working radius up to 30m. Control via radio or pendant. ATEX version is also available upon request.



RB Series

RB series is a fully hydraulic Rescue Marine Crane; the crane fulfills the SOLAS/IMO requirements. The crane is delivered as full assembled and tested.



FRB Series

FRB series is a fully hydraulic Rescue Marine Crane; the crane fulfills SOLAS/IMO requirements.

It is also provided with a constant wire tensioning system (CT) and shock absorber.



A - Frames

Sormec A-Frames are designed to perform offshore load handling, subsea load handling and to launch and recovery of special tools and equipment.

Sormec designs a-frames both in electro-hydraulic and electrically-driven versions.

The crane structure is manufactured with steel plates and duly shaped pipes. The vertical legs are built in electro welded steel sheets and fitted with hydraulic cylinders for lifting. The winch is placed on one of the A-frame's deck foundation brackets and it is designed for offshore lifting operations.

 SORMEC



© Nordic Yards

Low magnetic

Low magnetic crane is designed to reduce the magnetic interferences to the minimum level.

Every main component is manufactured in a-magnetic material and for the ones which it is not possible to do it, a degaussing process is used in order to reduce residual magnetism.

In addition, in order to measure magnetism level, special devices shall be used.

The materials for the crane components are chosen among stainless steel and aluminium.



Hatch Cover Gantry Cranes

Hatchcover Gantry Cranes are available in every required size.

They are available fully electric or hydraulic driven and can lift and move both hatch covers and tweendeck hatchcovers / grain bulkheads and any other goods within the vessel.

Cranes can also be fitted with winches and store cranes.

They can be designed to operate both in safe zone and in hazardous area.



Our services

In safe hands

The company every day aims to achieve the best after-sales service.

Our target is to provide support on site, 365 days a year, around the world.

Every member of our team is committed to the delivering exceptional service.

The constant training of our team of dealers builds a better understanding of operating systems, components, maintenance, and repair of all our cranes, in order to solve any unexpected problem as soon as possible.





Spare parts supply

Our philosophy is to work with clients to identify the most useful spare parts to meet their needs. With a dedicated team handling spare parts selection, we work with clients to determine the best solution for their business. Fast reliable and worldwide delivery.



Installation and commissioning

As cranes manufacturer, we exactly know how to **install and set up the equipment on your vessel to get optimal performances.** Our service engineers are prepared to satisfy your service requirements at any time.



Training

We offer **technical support and various training courses for crew and maintenance personnel.**

Our service offering has been developed from a deep understanding of the critical aspects of customers' business operations.



Remote assistance

Using GSM modem connection, we can access your crane's data via the internet in few minutes, offering support and help for remote diagnostics equipment problems.



Inspections and services

Inspections minimise the risk of costly breakdowns and help you stay aware of the exact condition of your equipment at a very competitive price.

Our services are:

- Spare parts supply
- Installation and commissioning
- Training
- Remote assistance
- Inspections

We're social!

Follow us on your favourite social
media sites!

@Sormec





Address: Sormec S.r.l.
Area Artigianale - C.da Sasi Alcamo
91011 - ITALY
Phone: +39 0924 502655
Fax: +39 0924 27047
Email: info@sormec.net

www.sormec.net

Thank You!

