

# Manufacturer of marine doors and windows since 1943

Baggerød trevare

Baggerød Horten

Norac Baggerød

Baggerød



1943



1989



2001



2015



## Product manual

**B**AGGERØD

[www.baggerod.no](http://www.baggerod.no)



# Contents

## Sliding doors A/H/B class

HB-S SLIDING DOOR.....	5
H-120S SLIDING DOOR.....	10
HB-SB SLIDING DOOR.....	12
P3, P 7 (TANDEM) Sliding door.....	14

## Hinged Doors A/H/B class

HB-H HINGED DOOR SINGLE / HB-HH HINGED DOOR DOUBLE.....	15
HB-HF HINGED DOOR SINGLE / HB-HHF HINGED DOOR DOUBLE.....	17
HB-5000 HINGED DOOR, SINGLE / HB-5000DD HINGED DOOR, DOUBLE .....	19
H-120H HINGED DOOR, SINGLE / H-120HH HINGED DOOR, DOUBLE .....	21
H-OH HINGED DOOR, SINGLE / H-OHH HINGED DOOR, DOUBLE .....	23
HB-H A-30 HINGED DOOR, SINGLE .....	25
G007 HINGED DOOR .....	27
P1, P2, P3, P6, P11 HINGED GLASS DOOR .....	29

## Escape Hatch

HB-5000H ESCAPE HATCH .....	30
HB-5000 G GLAZED ESCAPE HATCH .....	31

## Windows and Glazed partitions

Fire rated window .....	32
Glazed partitions .....	34
Windows and glazed partitions .....	35

## Drive systems

Baggerød/AP marine: Pneumatic operation system.....	36
Baggerød/AP marine: Electric operation system.....	36



# Manufacturer of marine doors and windows since 1943

Since the beginning, the company have supplied offshore installations and ships worldwide.

Baggerød offer doors, windows and escape hatches. Quality is key for the products that are built to last with a minimal amount of maintenance. High quality engineering and installation minimizes the risk of expensive shutdowns for maintenance. Through training and supervision of local crews, the company ensures that installation are made according to project specifications.

Baggerød products are certified towards the highest international standards.

Considering design, installation, fire protection, and sound reduction, Baggerød is continuously developing products to meet new needs and requirements.

Tapping into this experience, the result is high-tech, high-quality unified design, simplifying the process and the long-term benefit for the client.

Baggerød offers, fireproof, anti-glaring, and non-distorting window glass

These windows have been showcased on the North Sea "Ekofisk" platform hotel in the largest glass installation on an ocean platform, with a central window measuring 8x9 meters.

Most of their worldwide projects are handled directly from Norway, but has partners in Europe and Asia.

**Baggerød are now  
ISO 9001 certified**



Adriatic LNG Terminal

# Internal or external (A-0 to A-60)

## HB-S SLIDING DOOR

HB-S is a very flexible sliding door solution. Very solid without taking up to much space.

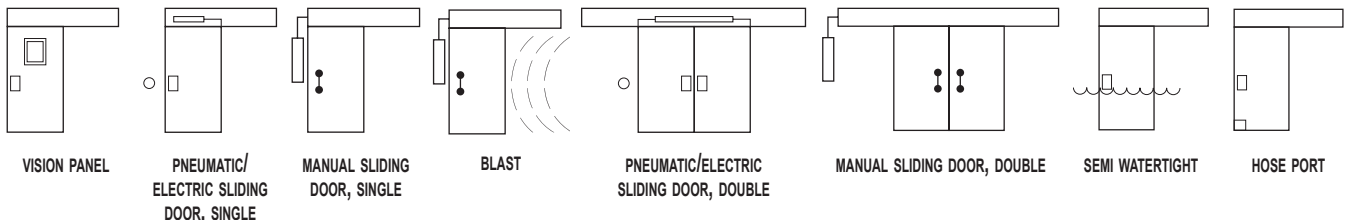
Internal or External A-Rated sliding door; A-0 to A-60.

The door can be delivered as a manual operated door or with electrical/ pneumatic operated door drive system.

Door-leaf is made of mild steel painted or in stainless steel finish.

Frame made of 3mm mild steel or stainless steel with bolting holes or with a frame for welding.

The door can be delivered as "Semi watertight" from outside. Water pressure tested up to 4.5m. Requirement for higher water pressure can be calculated.



Description	HB-S	HB-SP	HB-SW	HB-SWP	HB-SW-EL
Fire Class	A-60	A-60	A-60	A-60	A-60
Operation	Manual	Pneumatic	Manual	Pneumatic	Electrical
Door leaf	1.5–3 mm painted mild Steel or Stainless Steel surface	1.5–3 mm painted mild Steel or Stainless Steel surface	1.5–3 mm painted mild Steel or Stainless Steel surface	1.5–3 mm painted mild Steel or Stainless Steel surface	1.5–3 mm painted mild Steel or Stainless Steel surface
Frame	3 mm painted mild steel or Stainless Steel	3 mm painted mild steel or Stainless Steel	3 mm painted mild steel or Stainless Steel	3 mm painted mild steel or Stainless Steel	3 mm painted mild steel or Stainless Steel
Thickness of door leaf	79/104 mm	79/104 mm	79/104 mm	79/104 mm	79/104 mm
Water Pressure			2 m std. 4.5m with reinforcement	2 m std. 4.5m with reinforcement	
Weight (800 x 2000mm)	250 kg	350 kg	250 kg	350 kg	250 kg
Core material	Ceramic fibre	Ceramic fibre	Ceramic fibre	Ceramic fibre	Ceramic fibre
Sound reduction	NA	NA	Rw 43 db	Rw 43 db	Rw 43 db (with gasket)
Air and gas tight	NA	NA	0,1 m3/hm2 at 50 PA	0,1 m3/hm2 at 50 PA	0,1 m3/hm2 at 50 PA (with gasket)
Application	Internal/External	Internal/External	Internal/External	Internal/External	Internal/External

With reservation for errors and with rigths to make technical changes.

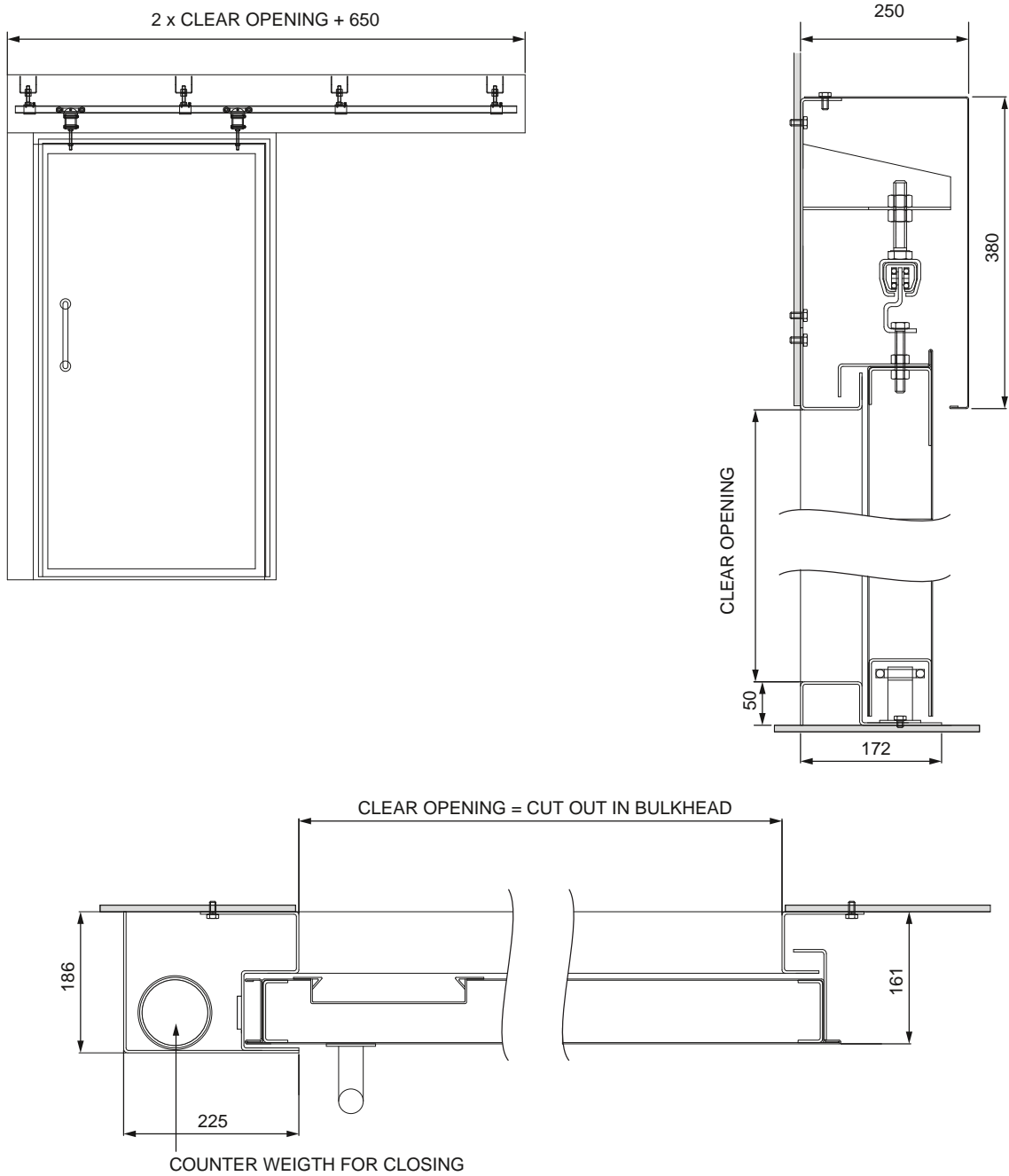
**Dimensions as guidelines only!** For project specific information, always refer to project drawings and not the dimensions in this manual.



# HB-S MANUAL OPERATION

## TECHNICAL DETAILS, INTERNAL

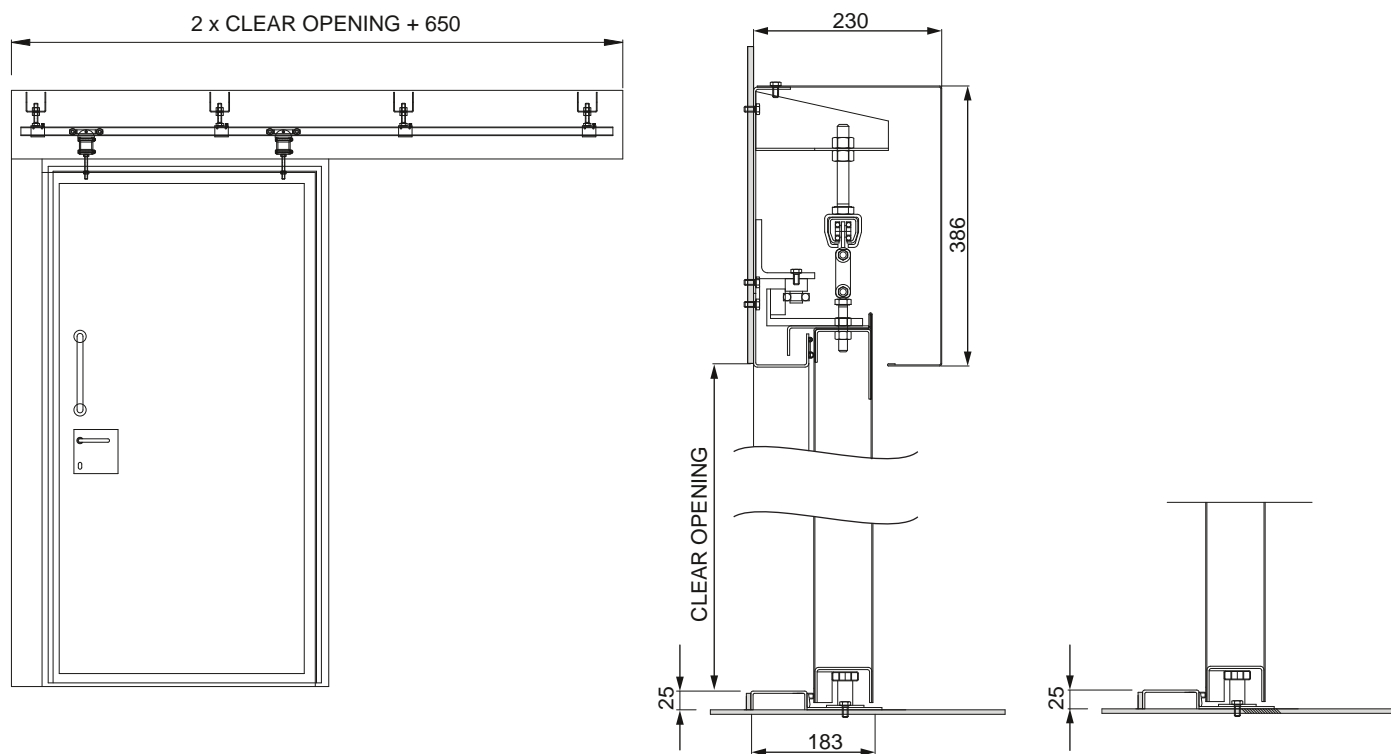
**NOTE:** The drawings are of a door with door leaf thickness of 79mm



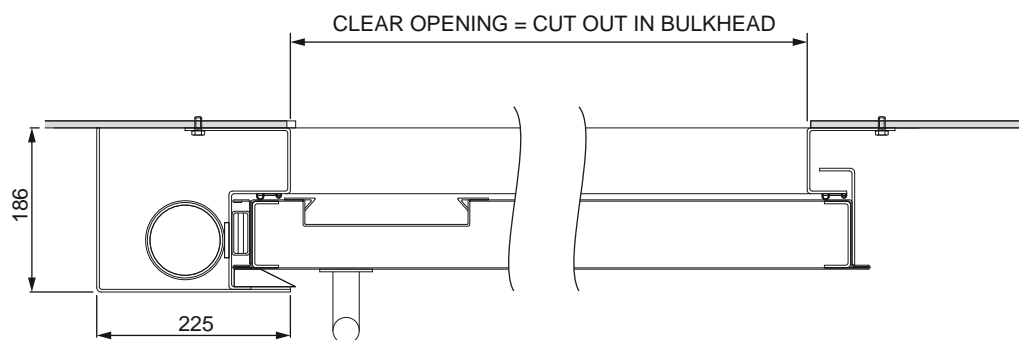
# HB-S (W) MANUAL OPERATION

## TECHNICAL DETAILS, EXTERNAL

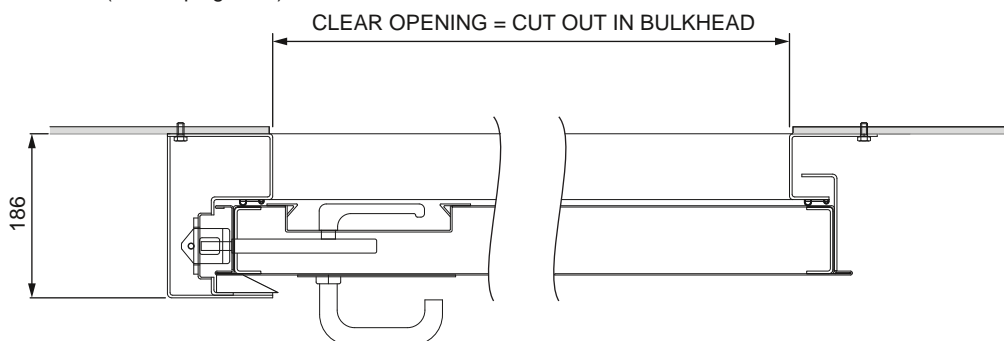
**NOTE:** The drawings are of a door with door leaf thickness of 79mm



HB-SW (with counter weight)



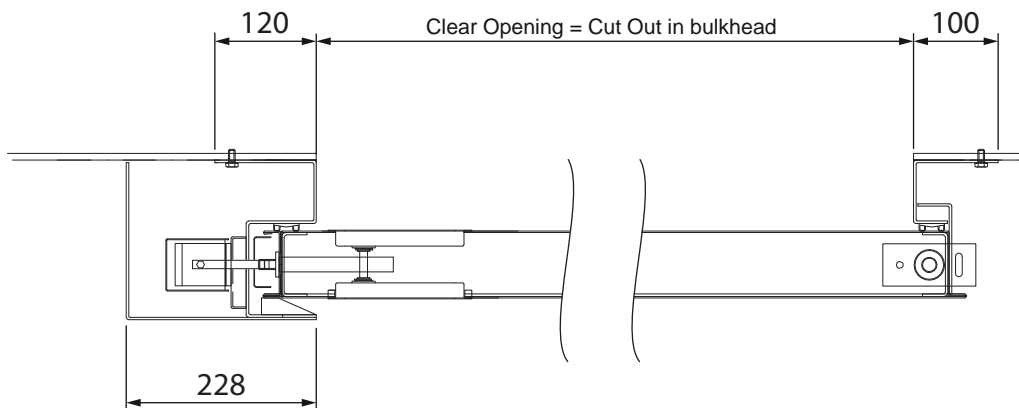
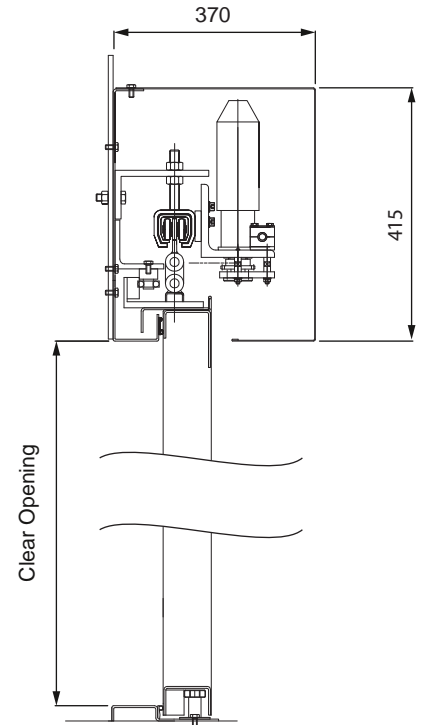
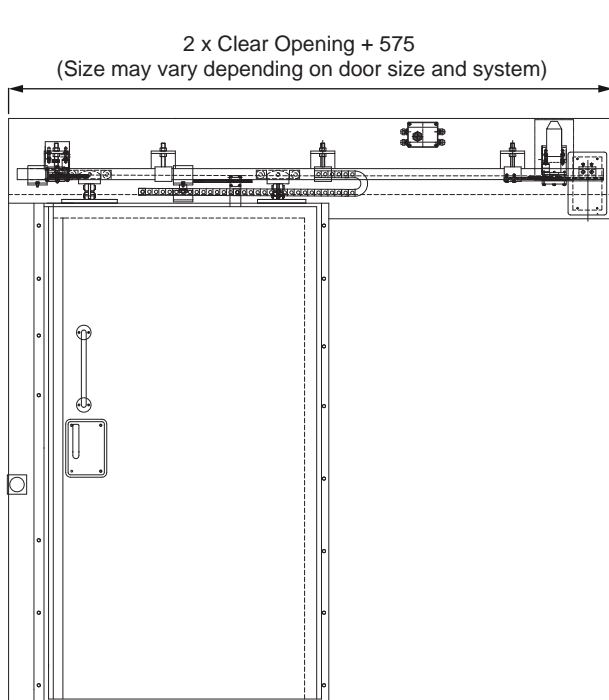
HB-SW (with sloping track)



# HB-S (EL) ELECTRIC OPERATION

TECHNICAL DETAILS, INTERNAL / EXTERNAL

**NOTE:** The drawings are of a door with door leaf thickness of 79mm

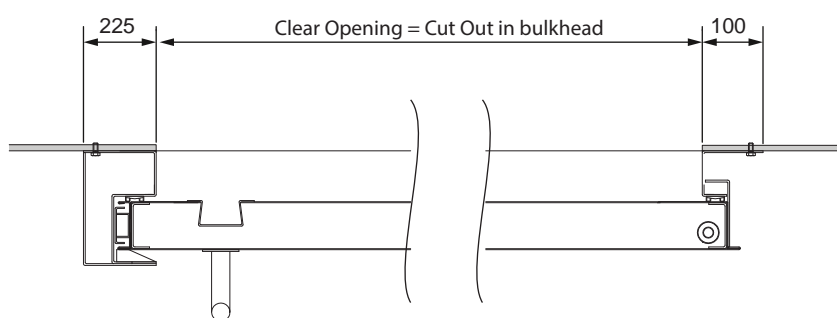
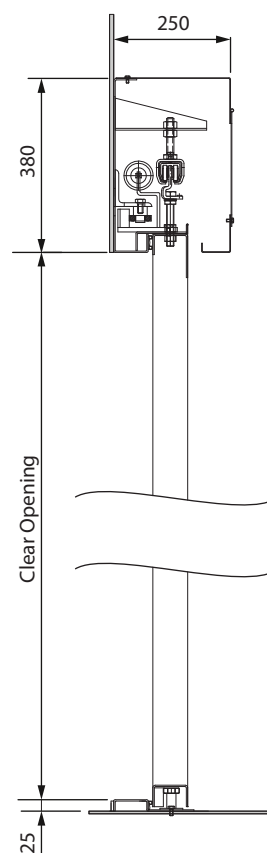
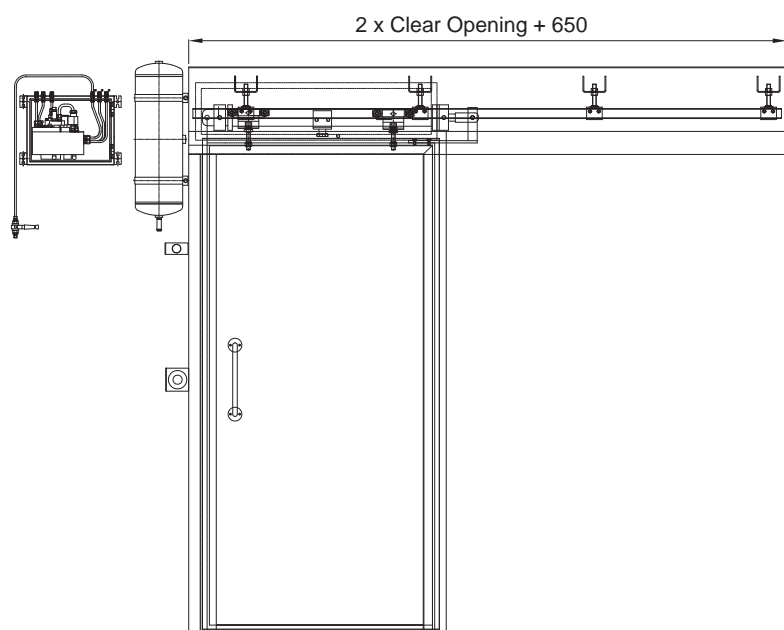




# HB-S (WP) PNEUMATIC OPERATION

## TECHNICAL DETAILS, EXTERNAL

**NOTE:** The drawings are of a door with door leaf thickness of 79mm



## External (Offshore, H-60, H-120)

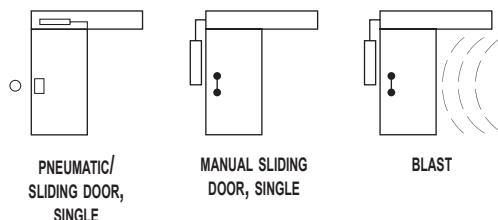
### H-120S SLIDING DOOR

H-120S is the choice when you need a large heavy duty sliding door

External sliding doors applied for offshore constructions as protection against hydrocarbon fires and explosions.

The doors are delivered manually operated or with pneumatic/operation.

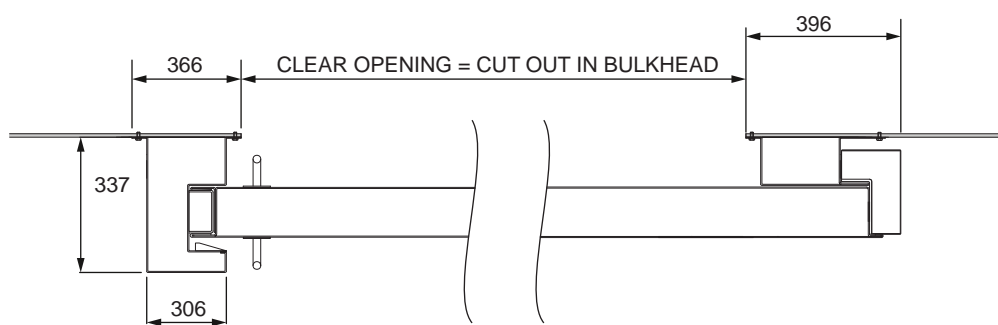
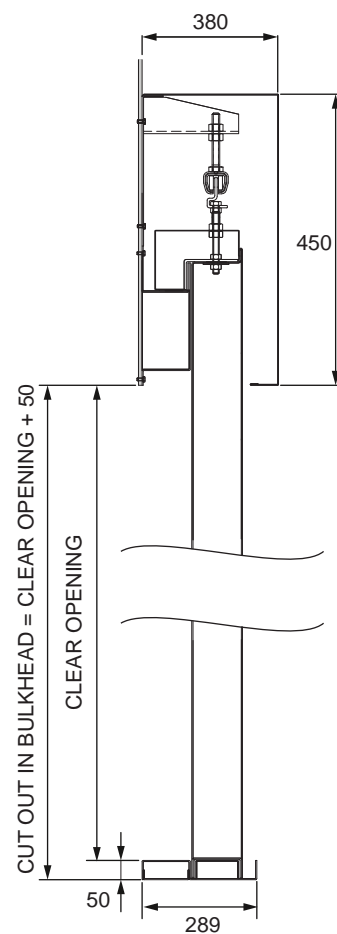
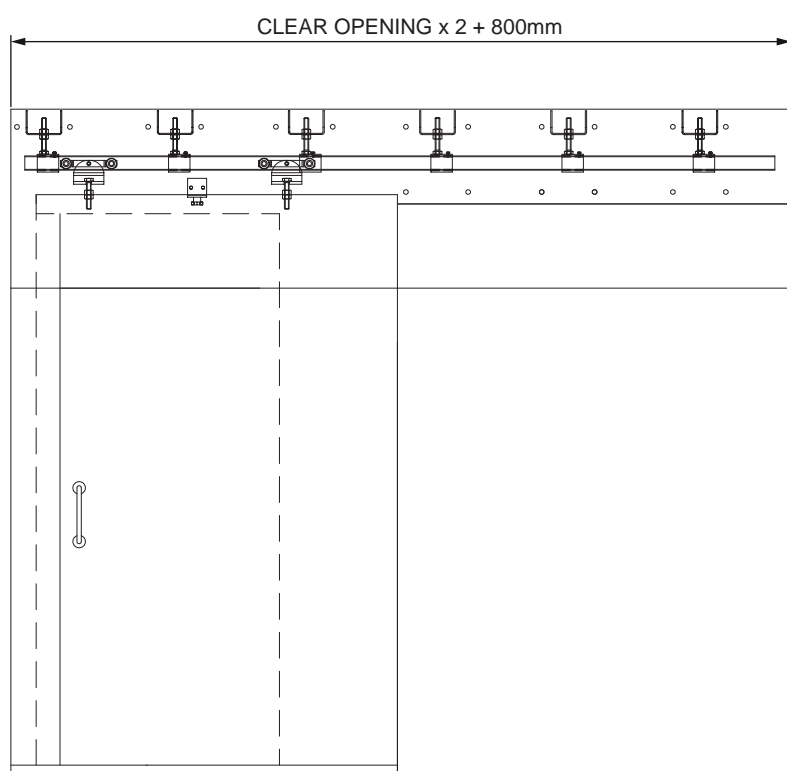
Frame for welding – alternatively bolting to bulkhead.



Description	H-120S	H-120SP
Fire Class	H-120	H-120
Door leaf	2 mm (alt. 3mm NORSOK) painted mild or stainless steel	2 mm (alt. 3mm NORSOK) painted mild or stainless steel
Frame	3 mm (alt. 4 or 5 mm) painted mild or stainless steel	3 mm (alt. 4 or 5 mm) painted mild or stainless steel
Thickness of door leaf	131 mm	131 mm
Core material	ceramic fibre	ceramic fibre
Weight (800x2100 mm)	550 kg	550 kg
Sound reduction	Rw=45 dB	Rw=45 dB
Air and gas tightness	0.3 m3/hm2 at 50 PA	0.3 m3/hm2 at 50 PA
Application	Internal/External	Internal/External

# H-120S

## TECHNICAL DETAILS



## INTERIOR DOOR (B-15)

### HB-SB SLIDING DOOR

HB-SB is a light but solid sliding door with high fire rating.

#### Interior B-class sliding door.

The door can be delivered as a manual operated door or with electric operated door drive system.

#### Door leaf:

Painted mild-steel or stainless steel surface.

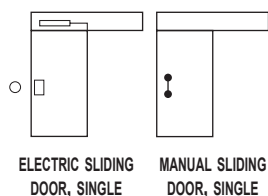
#### Door frame:

Clamping frame is standard. Delivery Bolting frame is an option.

Surface with primed, painted or stainless steel surface.



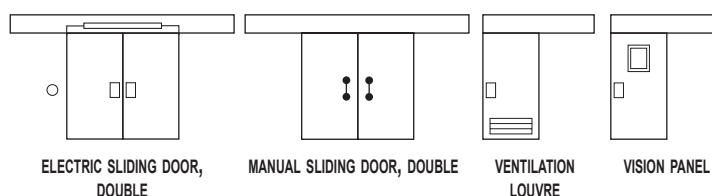
#### B-15-RATED:



ELECTRIC SLIDING  
DOOR, SINGLE

MANUAL SLIDING  
DOOR, SINGLE

#### NON-RATED:



ELECTRIC SLIDING DOOR,  
DOUBLE

MANUAL SLIDING DOOR, DOUBLE

VENTILATION  
LOUVRE

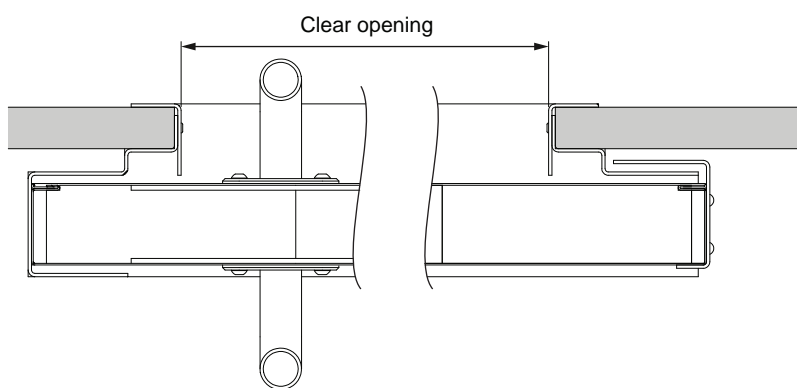
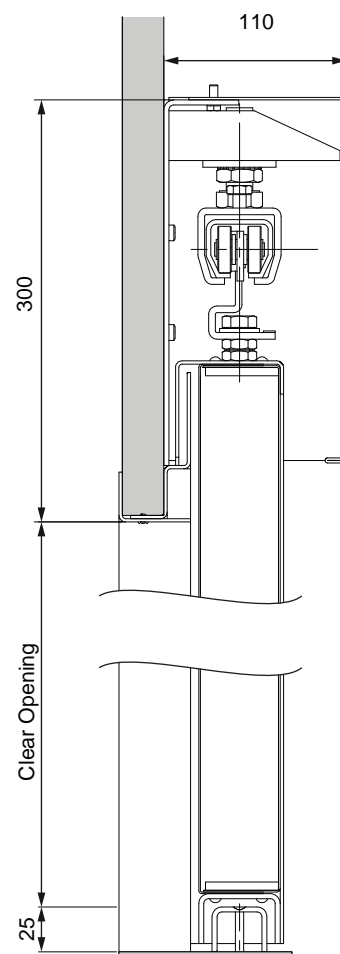
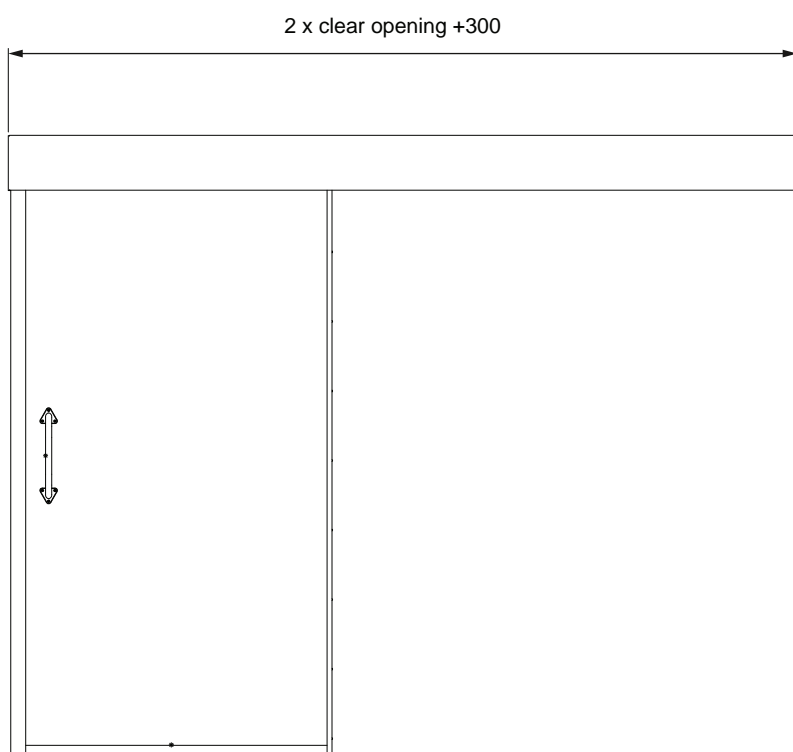
VISION PANEL

Description	HB-SB
Fire Class	B-15
Door leaf	Painted or stainless steel surface
Frame	2 mm painted mild steel or stainless steel.
Thickness of door leaf	46 mm
Weight (800x2000 mm)	85 kg
Core material	Rockwool
Sound reduction	Not tested
Air and gas tightness	Not tested
Application	Internal



# HB-SB B-15

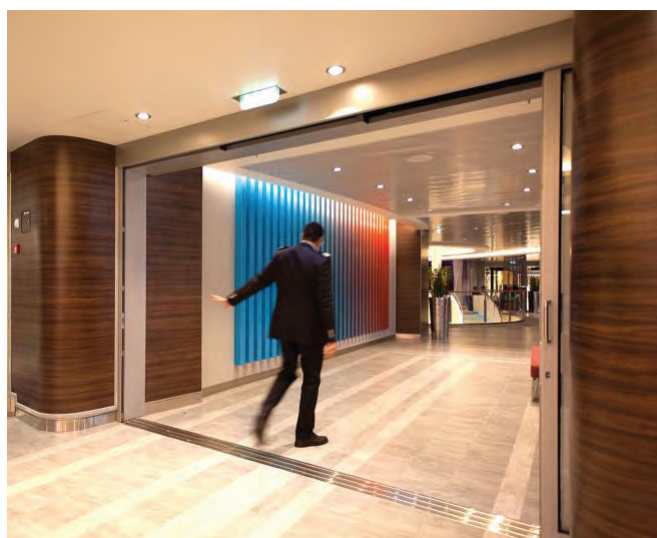
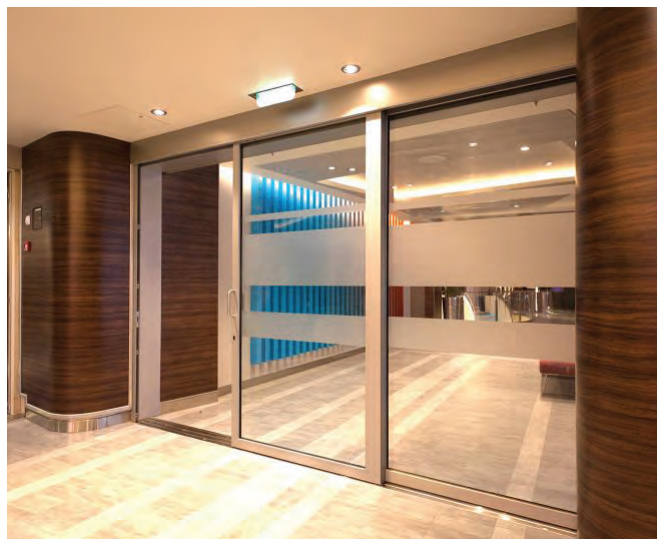
## TECHNICAL DETAILS



## Internal, Light weight (B-15)

### P3, P 7 (TANDEM) Sliding door

Baggerød represent Pocadel in the offshore market. Pocadel supplies top quality B0, B15 and A60 glass doors, sliding doors and walls/partitions/windows for marine and offshore use. All structures are made of aluminum, replacing the traditional steel frames. The fire glass is safety glass with good soundproofing qualities. The structures are light in weight as well as appearance.



Description	P3 Glazed Sliding door B-15 (Single/Double)	P7 Tandem sliding door B-15
Fire class	B-15	B-15
Operation	Manual/Automatic	Manual/Automatic
Glass type	Fire glass	Fire glass 15mm
Weight (800x2000)	60kg	65kg
Sound reduction Rw	(30db)	(30db)
Max element Size	2100x2100 - glass 950x1950	W unlimited x H 2640
Certificate number	BV 08226/D0 EC -24018	VTT-C11174-15-14

# Internal or external (A-0 to A-60)

## HB-H HINGED DOOR SINGLE / HB-HH HINGED DOOR DOUBLE

A solid door for internal or external use

### Door leaf:

1.5 mm mild steel or stainless steel surface. Ceramic fibre. Reinforcement plates for hinges, door closer and panic device are welded on inside of the door leaf.

### Door frame:

3mm mild steel or stainless steel surface. The frame fixing to the bulkhead is welded or bolted. Adjustable gasket for gas tightness or sound reduction.



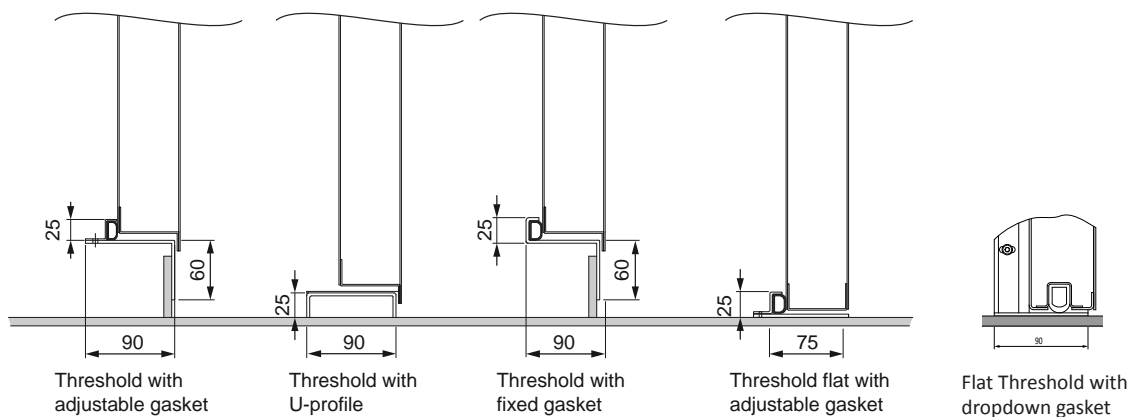
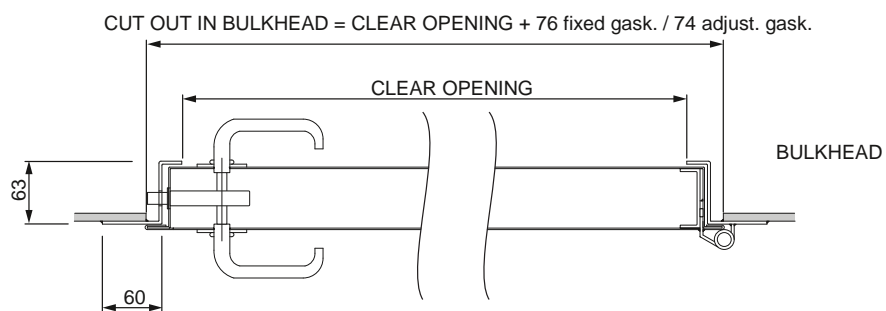
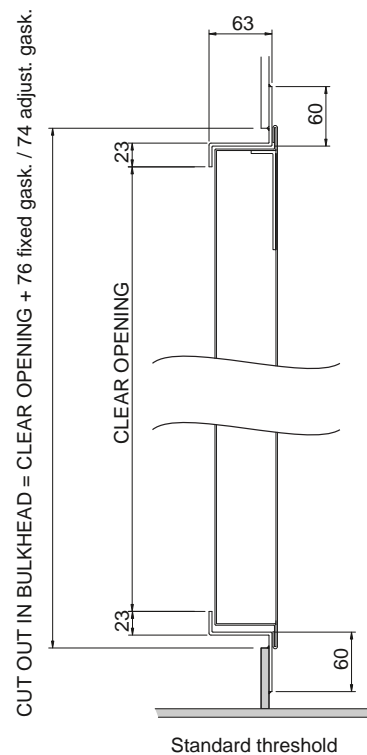
## OPTIONS:



Description	HB-H (single)	HB-HH (double)
Fire Class	A-60	A-60
Door leaf	1.5 mm (alt. 2mm) mild steel or stainless steel.	1.5 mm (alt. 2mm) mild steel or stainless steel.
Frame	3 mm painted mild steel or stainless steel.	3 mm painted mild steel or stainless steel.
Thickness of door leaf	63 mm	63 mm
Hinges	3ea special design with grease nipples	3ea special design with grease nipples
Weight (800x2000 mm)	80 kg	Weight depends on size
Core material	A-60 ceramic fibre	A-60 ceramic fibre
Sound reduction	RW = 40 dB (with gasket)	RW = 40 dB (with gasket)(Based on test of single door)
Air and gas tightness	0.2 m3/hm2 at 50 Pa	0.2 m3/hm2 at 50 Pa (Based on test of single door)
Application	Internal/external	Internal/external

## HB-H A-60

## TECHNICAL DETAILS



With reservation for errors and with rights to make technical changes.  
 Dimensions as guidelines only! For project specific information, always refer to project drawings and not the dimensions in this manual.



# Internal medium duty door with flat threshold (A-60)

## A-60 Certified with Dropdown gasket and Hose port

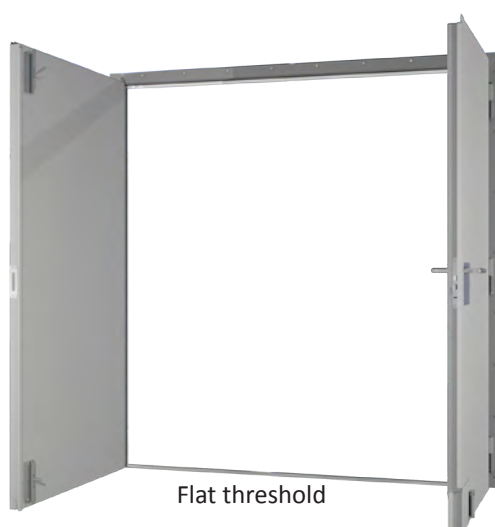
A solid and flexible door for internal use

### Door leaf:

1.5/2 mm mild steel or stainless steel surface. Ceramic fibre. Reinforcement plates for hinges, door closer and panic device are welded on inside of the door leaf.

### Door frame:

3mm mild steel or stainless steel surface. The frame fixing to the bulkhead is welded or bolted. Adjustable gasket for gas tightness or sound reduction.



Flat threshold



## OPTIONS:



Panic escape devices



Vision panel



Door closer



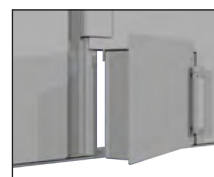
Electric door operation



Extra locking features



Hold open features



Hose port



Drop down gasket

Description	HB-H-F (single)	HB-HH-F (double)
Fire Class	A-60	A-60
Door leaf	1.5/2 mm painted mild steel or stainless steel.	1.5/2 mm mild steel or stainless steel.
Frame	3 mm painted mild steel or stainless steel.	3 mm painted mild steel or stainless steel.
Thickness of door leaf	63/64 mm	63/64 mm
Hinges	3ea special design with grease nipples	3ea special design with grease nipples
Weight (800x2000 mm)	80 kg	Weight depends on size
Core material	A-60 ceramic fibre	A-60 ceramic fibre
Sound reduction	RW = 40 dB (with gaskets)	RW = 40 dB (with gaskets)(Based on test of single door)
Air and gas tightness	0.2 m3/hm2 at 50 Pa	0.2 m3/hm2 at 50 Pa (Based on test of single door)
Application	Internal	Internal

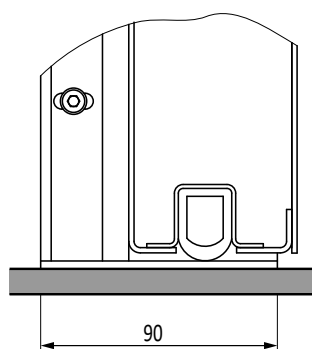
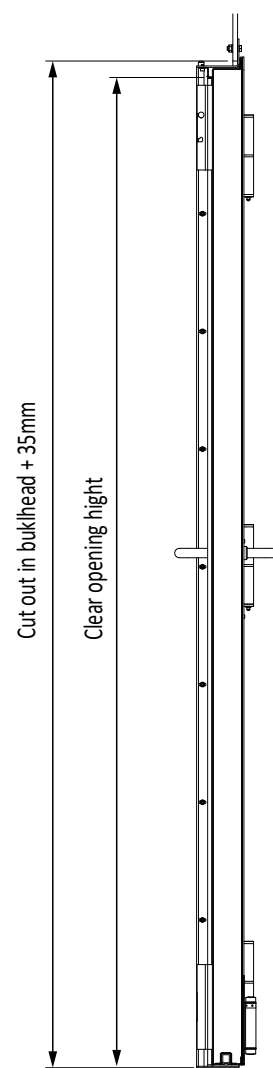
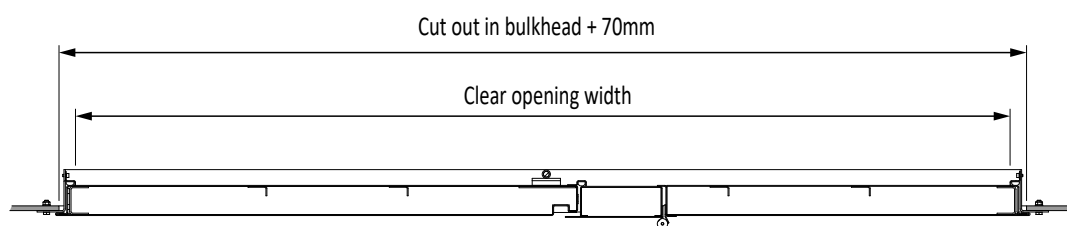
With reservation for errors and with rights to make technical changes.

**Dimensions as guidelines only!** For project specific information, always refer to project drawings and not the dimensions in this manual.

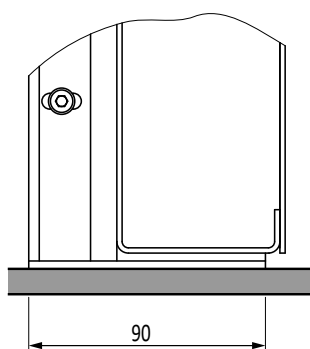


## HB-H-F A-60 / HB-HH-F A-60

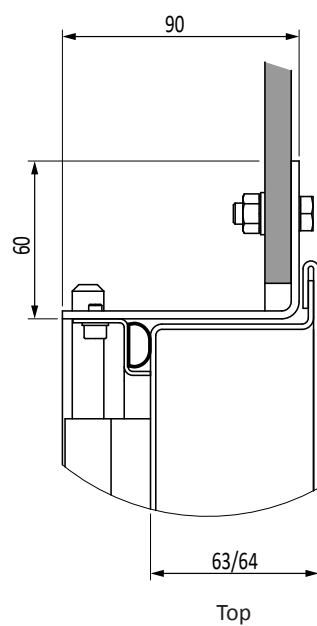
## TECHNICAL DETAILS



Flat Threshold with  
dropdown gasket



Flat Threshold



Top

## HB-5000 HINGED DOOR, SINGLE / HB-5000DD HINGED DOOR, DOUBLE

**A door for the roughest environments.  
Door leaf with reinforcements.**

### Door leaf:

Reinforcement plates for hinges, door closer and panic device are provided and welded on the inside of the door leaf.

### Door frame:

The profile of the frame is L-shaped mild or stainless steel with adjustable frame for gasket. The door frame is delivered suitable for bolting or welding.

### Hinges:

The bottom part of the hinges is welded to the frame and the top part is screwed to the door leaf with 3 screws on each hinge. The hinges are provided with stainless steel washers between the top and bottom parts to reduce friction.

### Special product customization:

In addition to our basic HB-5000 solutions, Baggerød can on a project basis make customization to the door according to your needs and demands.



Panic Bar



### OPTIONS:



PANIC ESCAPE  
DEVICES



VISION PANEL



DOOR CLOSER



ELECTRIC DOOR  
OPERATION



PNEUMATIC DOOR  
OPERATION



EXTRA LOCKING  
FEATURES



HEAT OR EARTH  
CABLE



HOLD OPEN  
FEATURES

Description	HB-5000	HB-5000DD (double)
Fire Class	A-60	A-60
Door leaf	2 mm (alt. 3 mm) painted mild steel or stainless steel	2 mm (alt. 3 mm) painted mild steel or stainless steel
Frame	3 mm (alt. 4 or 5 mm) L-shaped painted steel or stainless steel	3 mm (alt. 4 or 5 mm) L-shaped painted steel or stainless steel
Thickness of door leaf	64 mm	64 mm
Hinges	3ea special design stainl. steel with grease nipples	3ea special design stainl. steel with grease nipples
Gasket	Adjustable (Vulced gasket=option)	Adjustable (Vulced gasket=option)
Core material	A-60 ceramic fibre	A-60 ceramic fibre
Weight (800x2000 mm)	120 kg	
Sound reduction	RW = 44 dB	RW = 44 dB (with gasket) <i>(Based on test of single door)</i>
Air and gas tightness	0.4 m3/hm2 at 50 Pa	0.4 m3/hm2 at 50 Pa <i>(Based on test of single door)</i>
Water column from hinge side	2 m without reinforcement 4.5 m with reinforcement	
Application	Internal/External A-doors	Internal/external

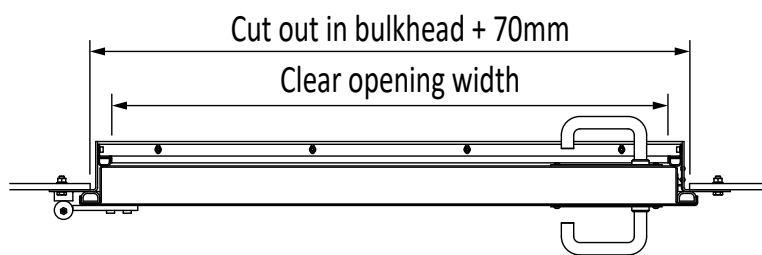
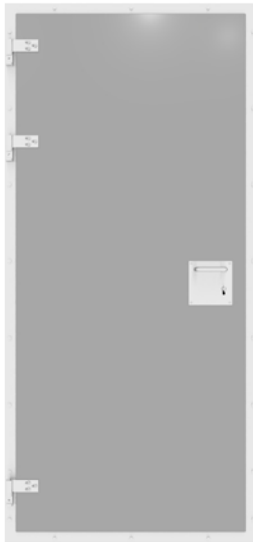
With reservation for errors and with rights to make technical changes.

**Dimensions as guidelines only!** For project specific information, always refer to project drawings and not the dimensions in this manual.



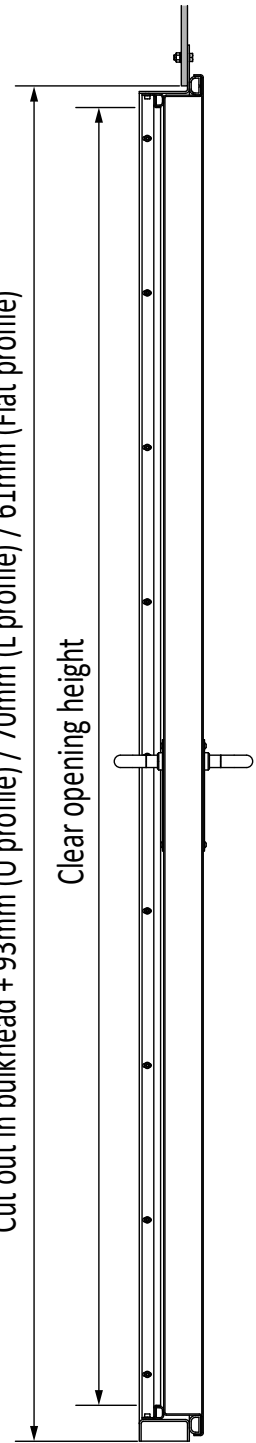
**HB-5000** A-60

## TECHNICAL DETAILS



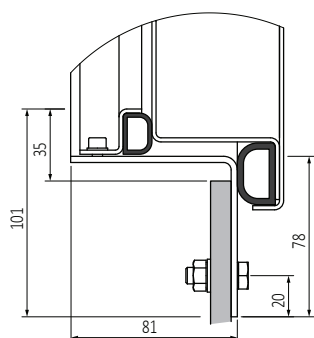
Cut out in bulkhead + 93mm (U profile) / 70mm (L profile) / 61mm (Flat profile)

Clear opening height

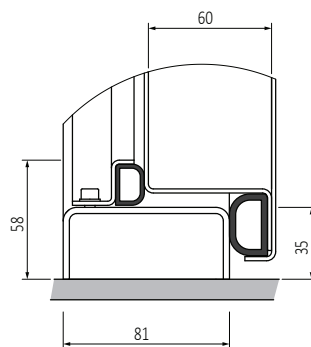


## Standard thresholds/sills

## L-profile

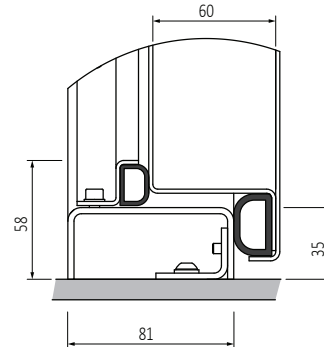
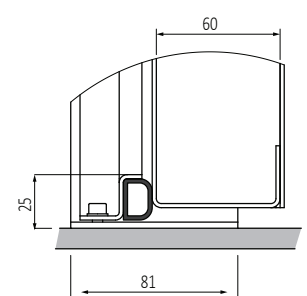


## U-profile



## Special thresholds/sills

## Removable

Flat with gasket  
Less water resistant)



# External, Offshore (H-60/H-120)

## H-120H HINGED DOOR, SINGLE / H-120HH HINGED DOOR, DOUBLE

External hinged doors applied for offshore constructions as protection against hydrocarbon fires and explosions. Approved for jet fire.

### Door leaf:

Reinforcement plates for hinges and door closer is provided and welded on the inside of the door leaf.

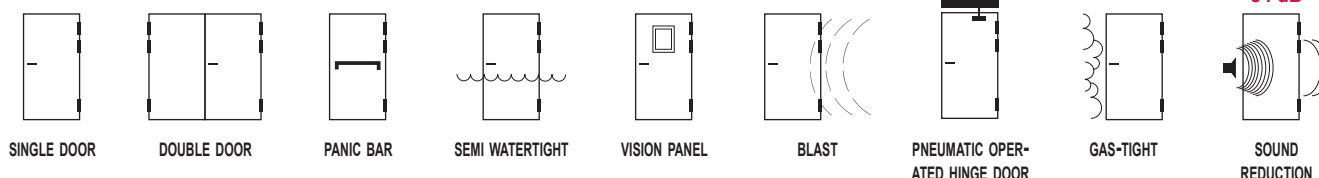
### Door frame:

The profile of the frame is shaped to give maximum tightness, with 3 separate areas of impact. The frame is delivered for bolting or welding.

### Hinges:

The hinges are bolted to the door leaf and welded to the door frame.

The hinges are provided with washers between the top and bottom parts to reduce friction.



Description	H-120H single hinged	H-120HH double hinged
Fire Class	H-60 / H-120	H-60 / H-120
Door leaf	2 mm (alt. 3mm Norsok) painted mild or stainless steel	2 mm (alt. 3mm Norsok) painted mild or stainless steel
Frame	3 mm (alt. 4 or 5 mm) painted mild or stainless steel	3 or 4 mm painted mild or stainless steel
Thickness of door leaf	129 mm	129 mm
Hinges	4ea special design stainl. steel with grease nipples	4ea special design stainl. steel with grease nipples
Core material	ceramic fibre	ceramic fibre
Weight (800x2000 mm)	220 kg	410 kg
Sound reduction	Rw=54 dB	Rw=54 dB (Based on test of single door)
Lock-case	3ea operated with one Center mounted handle	3ea operated with one Center mounted handle
Air and gas tightness	0.4 m3/hm2 at 50 Pa	0.4 m3/hm2 at 50 Pa (Based on test of single door)
Water column from hinge side	2 m without reinforcement 4.5 m with reinforcement	
Application	Offshore platforms	Offshore platforms

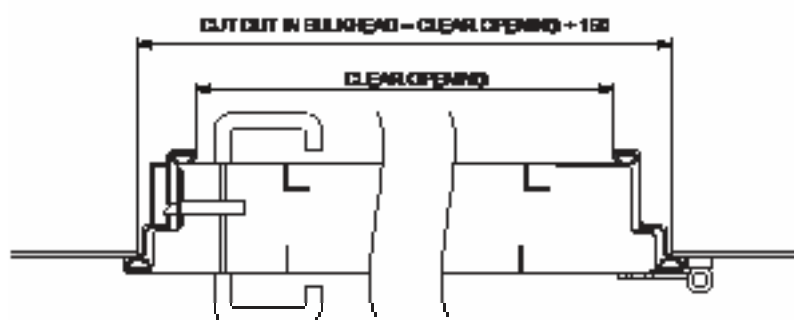
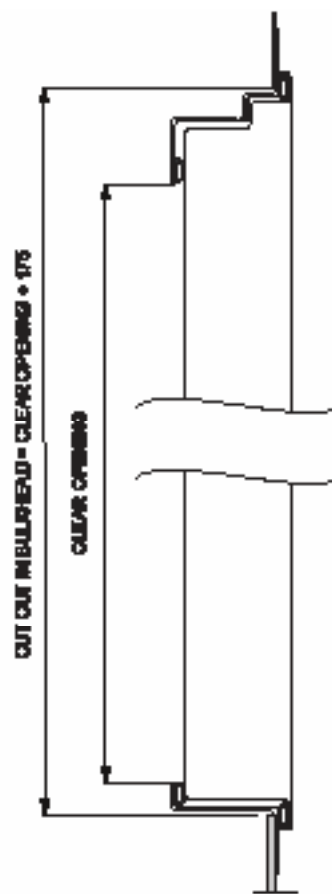
With reservation for errors and with rigths to make technical changes.

**Dimensions as guidelines only!** For project specific information, always refer to project drawings and not the dimensions in this manual.



## H-120H

## TECHNICAL DETAILS



## External (Offshore, H-0)

### H-0H HINGED DOOR, SINGLE / H-0HH HINGED DOOR, DOUBLE

External hinged doors for offshore constructions as protection against hydrocarbon fires and explosions. Reinforced door leaf and hinge arrangement.

#### Door leaf:

Reinforcement plates for hinges and door closer is provided and welded on the inside of the door leaf.

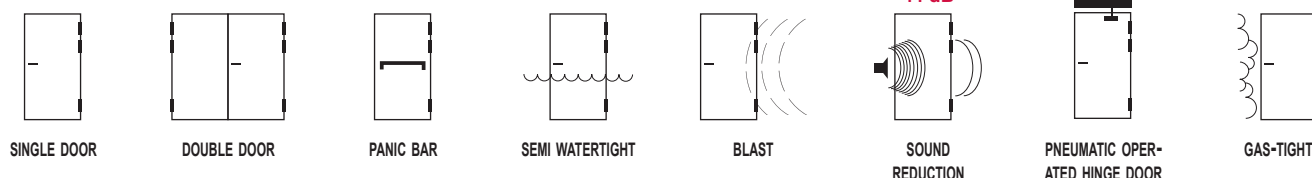
#### Door frame:

The profile of the frame is shaped to give maximum tightness, with 3 separate areas of impact. The frame is delivered for bolting or welding.

#### Hinges:

The hinges are bolted to the door leaf and welded to the door frame.

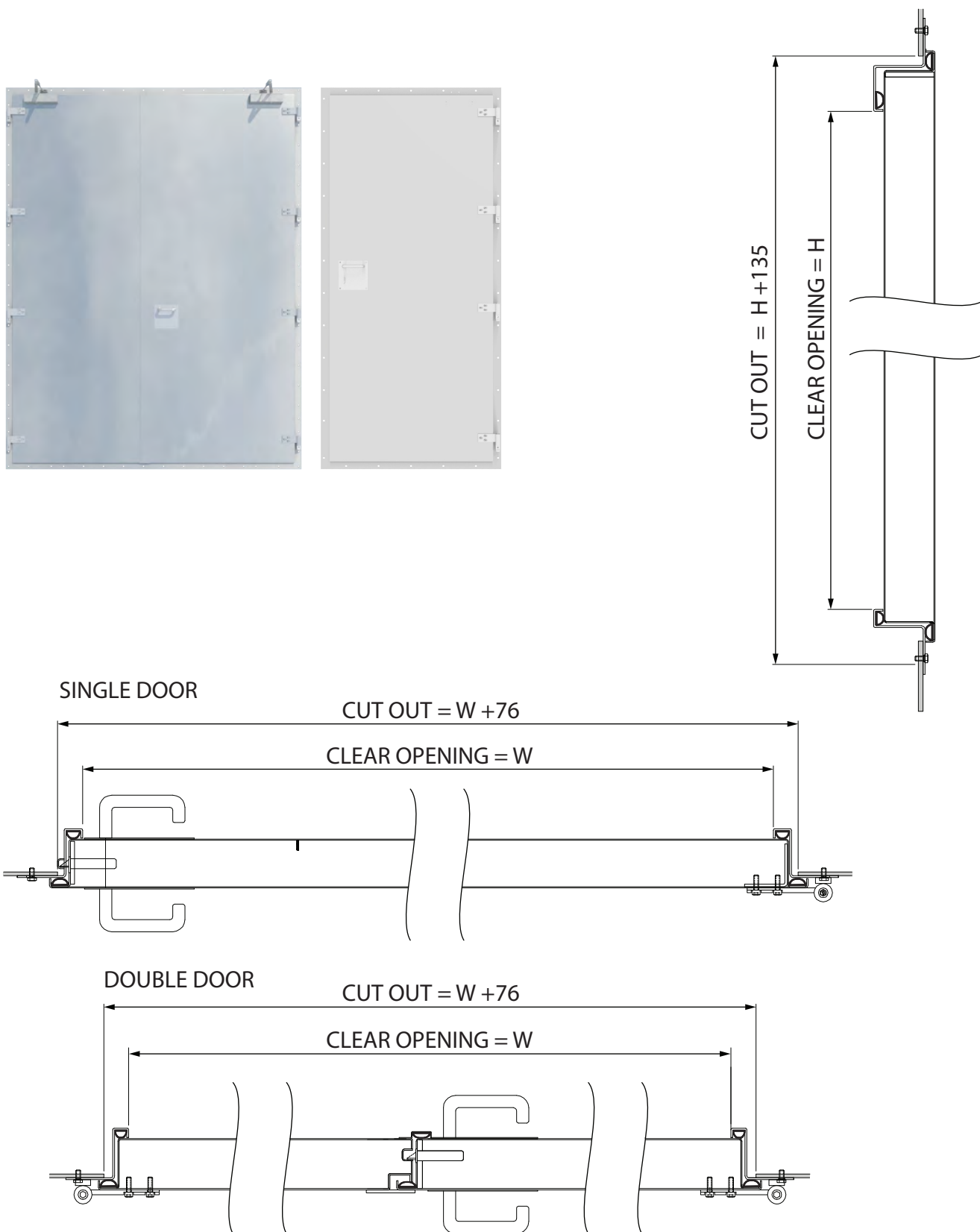
The hinges are provided with washers between the top and bottom parts to reduce friction.



Description	H-0H single hinged	H-0HH double hinged
Fire Class	H-0	H-0
Door leaf	2 mm (alt. 3mm Norsok) painted mild or stainless steel	2 mm (alt. 3mm Norsok) painted mild or stainless steel
Frame	3 mm (alt. 4 or 5 mm) painted mild or stainless steel	3 mm (alt. 4 or 5 mm) painted mild or stainless steel
Thickness of door leaf	80 mm	80 mm
Hinges	4ea special design stainl. steel with grease nipples	4ea special design stainl. steel with grease nipples
Core material	ceramic fibre	ceramic fibre
Weight (800x2000 mm)	150 kg	225 kg
Sound reduction	Rw=44 dB	Rw=44 dB (Based on test of single door)
Lock-case	3ea operated with one center mounted handle	3ea operated with one center mounted handle
Air and gas tightness	0.4 m3/hm2 at 50 Pa	0.4 m3/hm2 at 50 Pa (Based on test of single door)
Application	Offshore platforms	Offshore platforms

## H-0H

## TECHNICAL DETAILS





## Internal (A-0 / A-30)

# HB-H A-30 HINGED DOOR, SINGLE

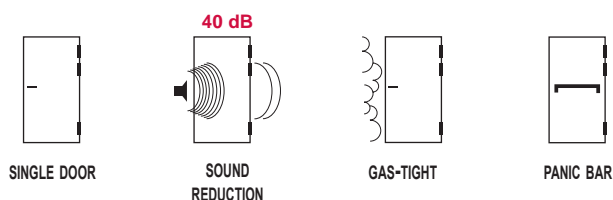
HB-H A-30 is a lightweight door with a high fire rating, excellent for used in combination with our door type G007

### Door leaf:

Made of 1mm PVC foiled steel plate with mineral wool core. This door can also be delivered with painted mild-steel or stainless steel surface.

### Door frame:

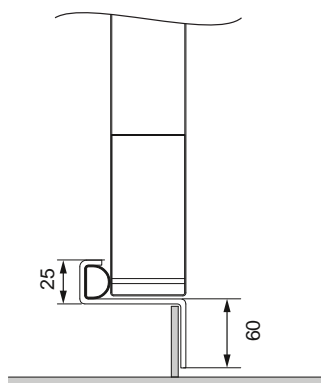
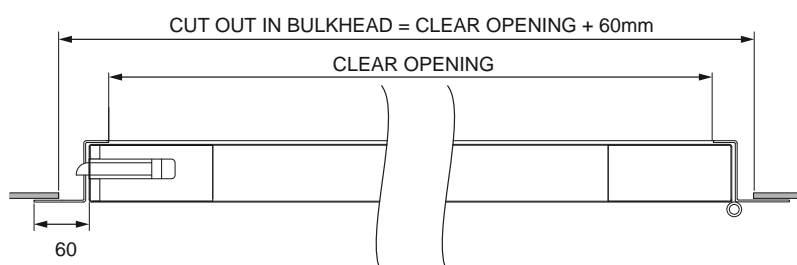
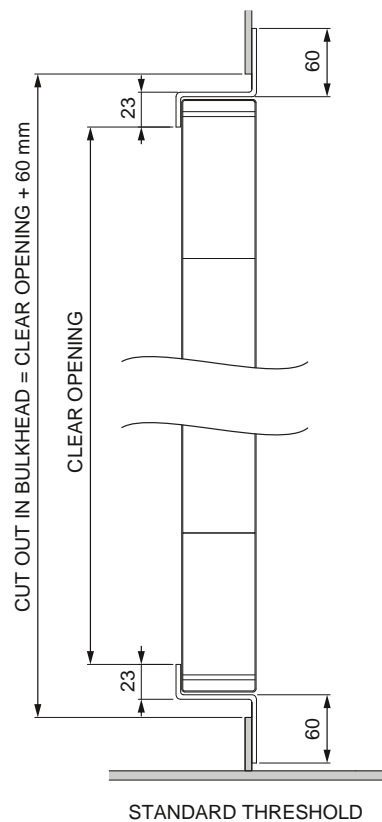
HB-H A-30 has many flexible installation solutions. Door frame with Z-profile for welding is standard. As an option the doors can be delivered with bolting or with counter frame.



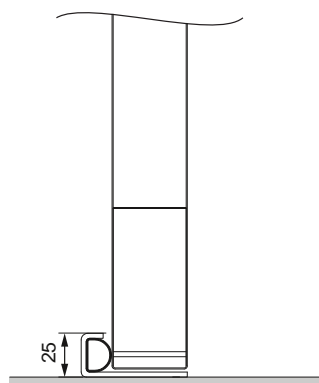
Description	HB-H
Fire Class	A-0 / A-30
Door leaf	PVC coated or painted steel sheet
Frame	3 mm painted mild steel
Thickness of door leaf	48 mm
Hinges	3 ea. stainless steel
Weight (800 x 2000 mm)	57 kg
Core material	Rockwool
Sound reduction	RW = 40 dB (with gasket)
Air and gas tightness	Yes (with gasket)
Application	Internal

## HB-H A-30

## TECHNICAL DETAILS



THRESHOLD WITH GASKET



FLAT THRESHOLD WITH GASKET

With reservation for errors and with rights to make technical changes.  
 Dimensions as guidelines only! For project specific information, always refer to project drawings and not the dimensions in this manual.

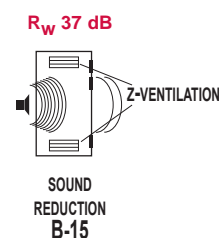
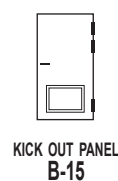
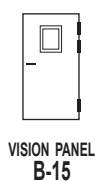
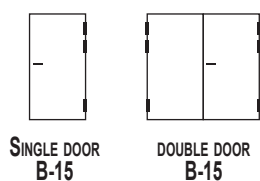
## Internal (B-15)

### G007 HINGED DOOR

G007 is a flexible and light interior door that gives good fire protection.

These doors are delivered as standard or with sound reduction quality up to 37 dB with a soft insulation core.

Colours and patterns according to available and approved PVC marine designs as well as painted surfaces.



Description	G007	G007L32	G007L37	G007LS37
Fire Class	B-15	B-15	B-15	B-15
Door leaf	PVC coated or painted steel sheets	PVC coated or painted steel sheets	PVC coated or painted steel sheets	PVC coated or painted steel sheets
Frame	1.5 mm painted mild steel	1.5 mm painted mild steel	1.5 mm painted mild steel	1.5 mm painted mild steel
Thickness of door leaf	40 mm	40 mm	40 mm	40 mm
Hinges	3ea stainless steel	3ea stainless steel	3ea stainless steel	3ea stainless steel
Weight (800x2000 mm)	45 kg	45 kg	50 kg	55 kg
Core material	Rockwool	Rockwool	Rockwool	Rockwool
Sound reduction	NA	32 dB	37 dB	37 dB
Air and gas tightness	NA	NA	NA	NA
Application	Interior doors	Interior doors	Interior doors	Interior doors
Comments				Ventilation louvre

15.04.15

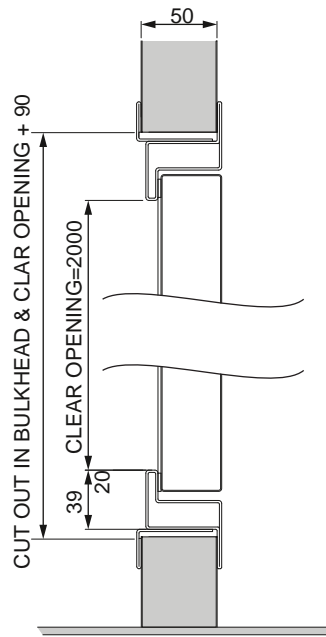
With reservation for errors and with rights to make technical changes.  
**Dimensions as guidelines only!** For project specific information, always refer to project drawings and not the dimensions in this manual.



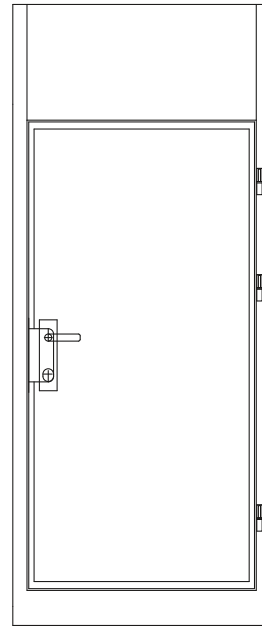
0575

## G007

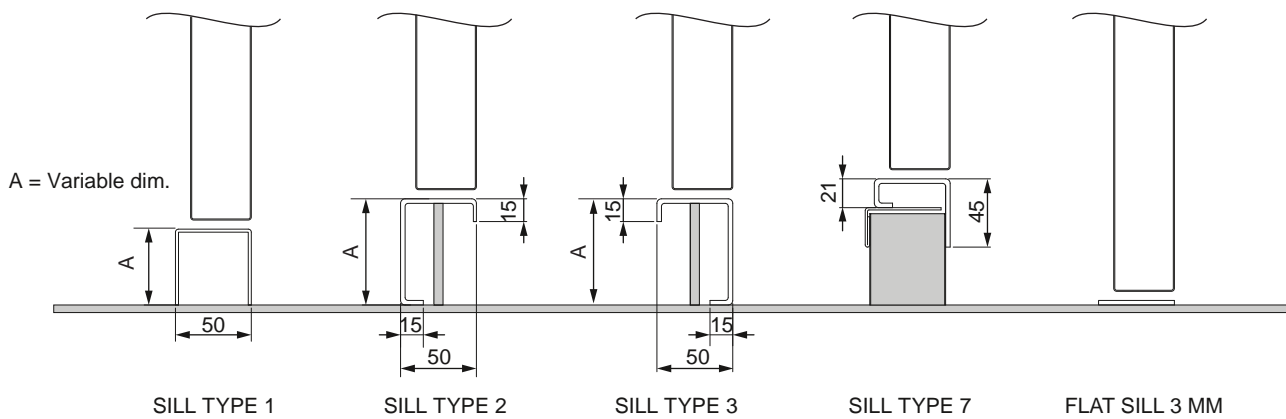
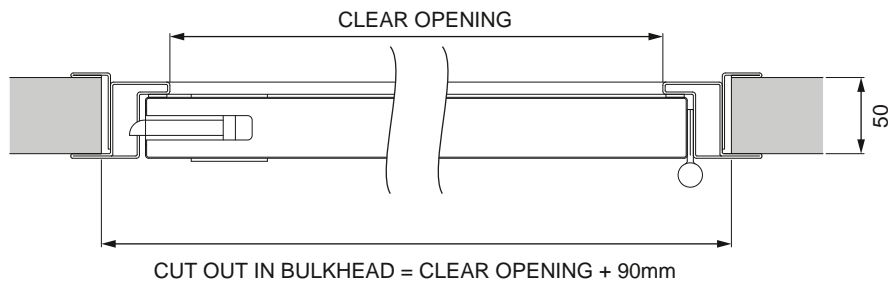
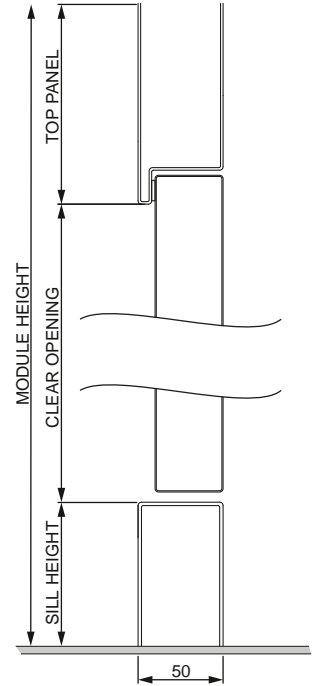
## TECHNICAL DETAILS



SILL TYPE 4



Door with integrated top panel and sill type 1



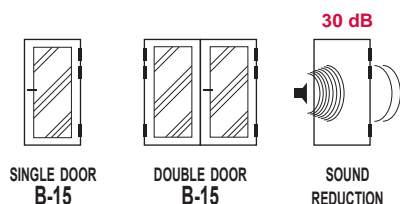
## Internal, Light weight aluminium (B-15 / A-60)

### P1, P2, P3, P6, P11 HINGED GLASS DOOR

Baggerød as represent Pocadel in the offshore market. Pocadel supplies top quality B0, B15 and A-60 glass doors, sliding doors for marine and offshore use. All structures are made of aluminum, replacing the traditional steel frames. The fire glass is safety glass with good soundproofing qualities. The structures are light in weight as well as appearance.



The picture is different from the original product



Description	Glazed single door P1	Glazed Double door
Fire class	B-15 / A-60	B-15 / A-60
Operation	Manual/Automatic	Manual/Automatic
Glass type	Fireglass	Fireglass
Weight (800x2000)	50kg	
Sound reduction Rw	30db/43db	30db/43db
Max element Size	Single 1084x2125	Double 2200x2125
Certificate number	BV 14433/C0 EC	BV 14433/C0 EC

## External, heavy duty (A-60)

# HB-5000H

ESCAPE HATCH

**Hatch leaf:**

Door frame in stainless steel.

**Hatch Frame:**

3mm frame in stainless steel with fixed gasket.

**Options:**

Panic bar.



Description	Escape Hatch HB-5000
Fire Class	A-60
Door leaf	2 mm stainless steel
Frame	3 mm stainless steel
Handle	Recessed handle
Hinges	2 x HB-5000
Weight (800x800 mm)	90 kg
Sound reduction	RW = 44 dB
Air and gas tightness	0,4 m³/nm² at 50 Pa
Application	External
Options:	Panic bar



# External, (A-60)

## HB-5000 G GLAZED ESCAPE HATCH

### Hatch leaf:

Door frame in stainless steel.

Fire rated glass with extra pressure-glass.

### Hatch Frame:

3 mm frame in stainless steel with fixed gasket.

### Options:

Panic bar.

Protection grid.

Baggerød now offers a combined fire rated window and escape hatch. We foresee a demand within offshore living quarters and container modules installed offshore, which require both a fire rated window and a means of emergency escape.

Our new A-60 Glazed Escape Hatch gives both in one solution!

The installation will of course be more cost effective than a conventional installation using a fire-rated window and a separate escape hatch or door.



Protection grid

Description	Hatch
Fire Class	A-60
Door leaf	2 mm stainless steel
Frame	3 mm stainless steel
Thickness of glass	27 mm
Hinges	2 x HB5000
Weight (800x800 mm)	90 kg
Sound reduction	44 dB
Air and gas tightness	Yes
Application	External
Options:	Panic bar, Protection grid

## Steel windows (A-0/A-60/H-60/H-120)

# Fire rated window

The window unit consist of a 4mm or 6mm main frame for welding or bolting to bulkhead, made of coated mild or stainless steel.

A sealed condensation free glass panel, a fixing frame and an adjustable internal frame.

The internal frame may be equipped with an integrated venetian or roller blind.

### Options:

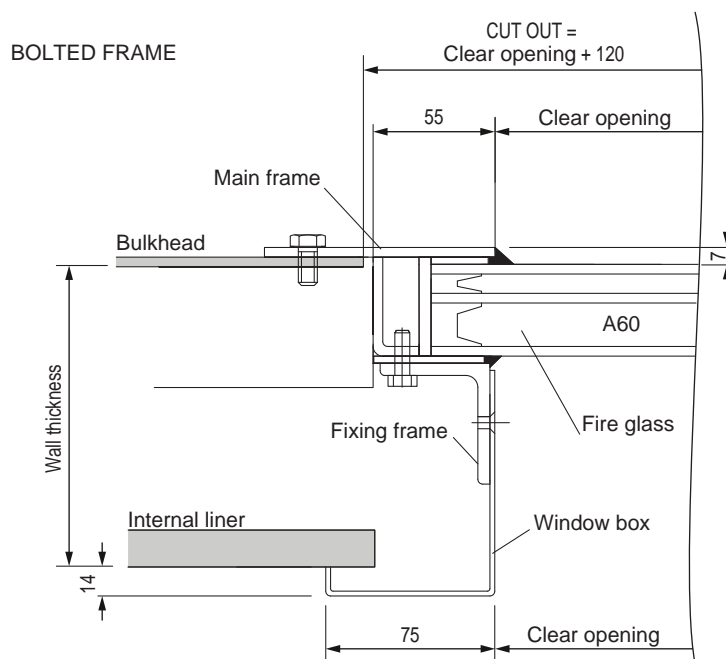
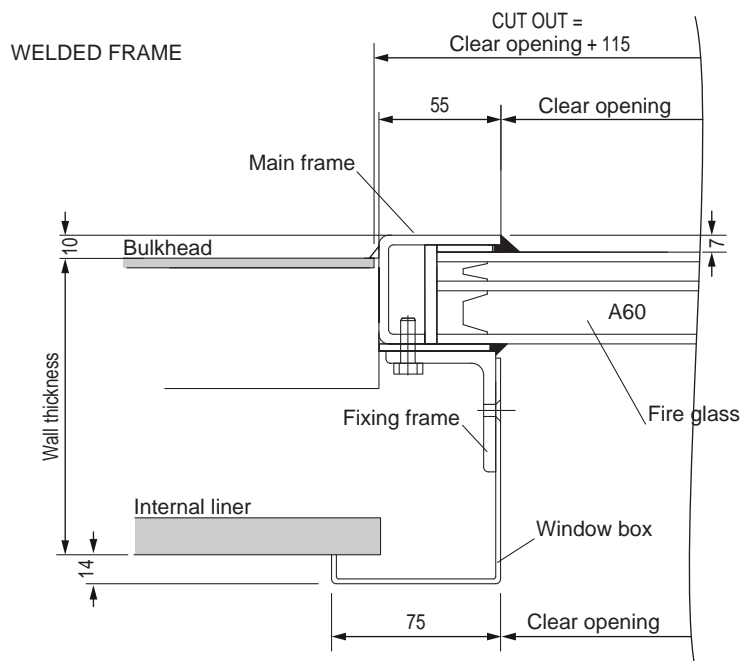
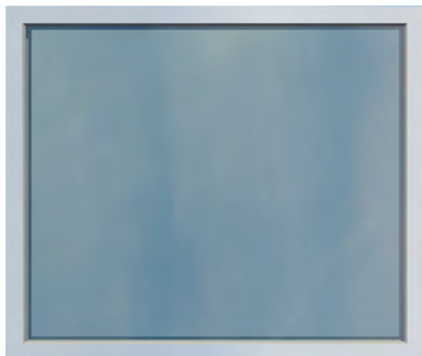
- Roller Blinds
- Electric roller blinds
- Venetian Blinds
- Sound glass



**R<sub>w</sub> 48 - 62 dB**

# Fire rated Windows

## TECHNICAL DETAILS



## External Steel (A-60)

# Glazed partitions

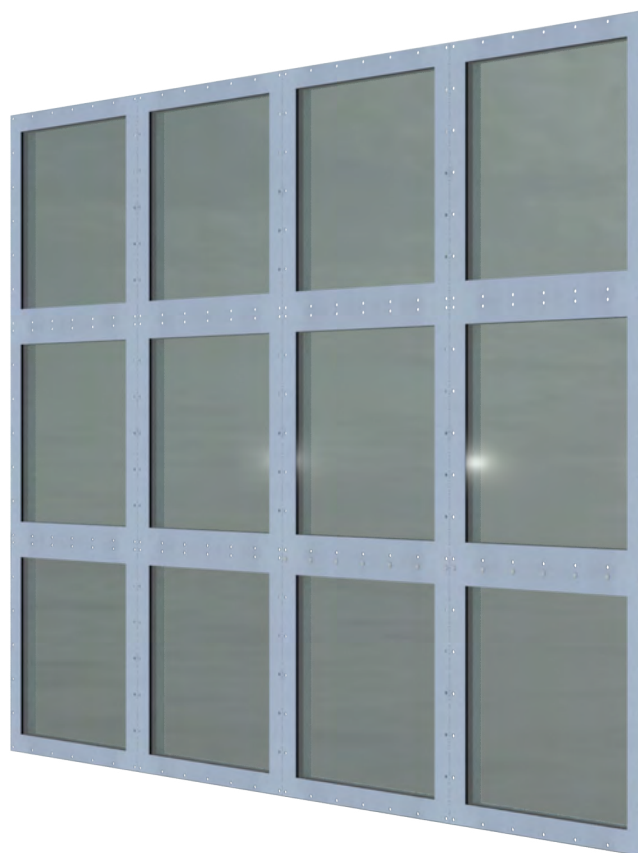
Sound reduction:  $R_w = 48$  dB

The partition is built up by a framework of hollow profiles with insulation. Profiles are made from painted steel or stainless steel.

The profiles are fixed to the framework as a “clip on” solution with no visible bolts or blind rivets.

Max glass size: 1150 x 1950 mm.

Colours according to  
RAL Colour Chart.



## Light weight (A-60 / B30)

# Windows and glazed partitions

Baggerød as represent Pocadel in the offshore market. Pocadel supplies top quality B0, B15 and A-60 glass walls, partitions and windows for marine and offshore use. All structures are made of aluminum, replacing the traditional steel frames. The fire glass is safety glass with good soundproofing qualities. The structures are light in weight as well as appearance.



Description	4. Glazed partition/window B-15	5. Glazed partition/window A-60	8. Glazed Bulk-head, Offshore	9. Glass wall (Butt joint)	10. Glazed partition/window B-15
Fire class	B-15	A-60	B-15	B-15	B-15
Operation					
Glass type	Fire glass (Option: UV protection)	23mm internal, 27mm exterior, 39mm SPA/sauna	43mm sound insulated Fireglass or 50mm sandwich panel	Fire glass 16mm	Fireglass 10mm (Option: UV protection)
Weight (800x2000)	47kg	92, 108, 120kg	99kg	64kg	47kg
Sound reduction Rw	(34db)	(40db)	46db	39db	(34db)
Max element Size	1055x2030	1050x2210	1500x2730	W3120xH2760	2270x2303
Certificate number	BV 08228/C1 EC	BV 12324/D0 EC	VTT-C-11172-15-14	VTT-C11206-15-14	BV 16490/C0 EC

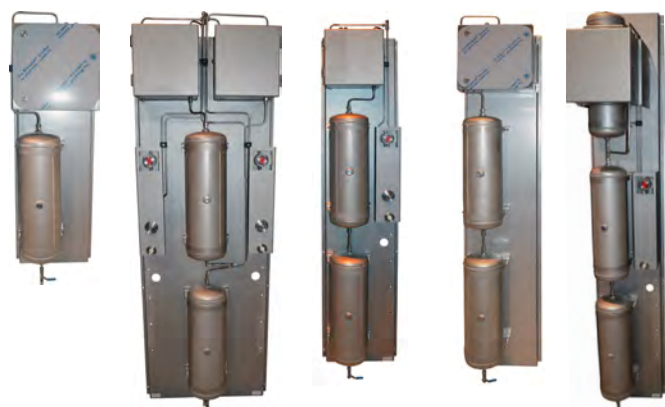
## Baggerød/AP marine: Pneumatic operation system

In cooperation with AP-Marine Baggerød, have developed a pneumatic drive system.

This is a powerfull and durable system for sliding doors and hinged doors. The system can be delivered in parts for complete assembly on site, or pre-assembled on brackets.

**For more information, contact the baggerød sales team:**

[sales@baggerod.no](mailto:sales@baggerod.no)



## Baggerød/AP marine: Electric operation system

In cooperation with AP-Marine, Baggerød have developed an electric drive system.

This is a powerfull and durable system for sliding doors.

**For more information, contact the baggerød sales team:**

[sales@baggerod.no](mailto:sales@baggerod.no)





Notes:

Notes:





**Baggerød AS**

Office/factory address: Horten Industripark, Nedre vei 8, Building 30C, 3183 Horten, Norway

Post address: Post address: Post box 155, NO-3192 - Horten, Norway

Telephone: +47 33 03 56 80

E-mail: [sales@baggerod.no](mailto:sales@baggerod.no)

Website: [www.baggerod.no](http://www.baggerod.no)

Enterprise no: NO 983 493 653

