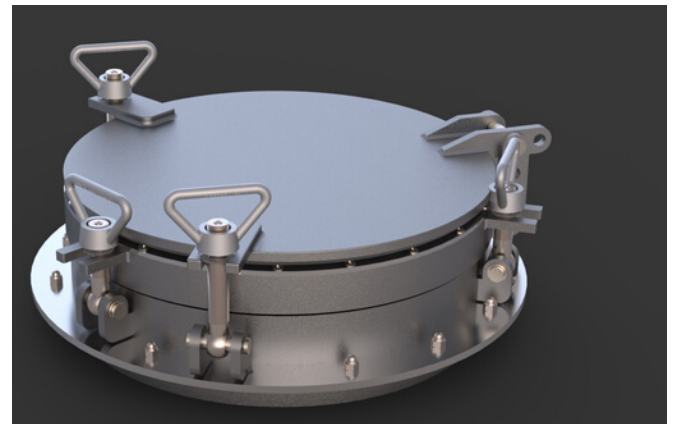
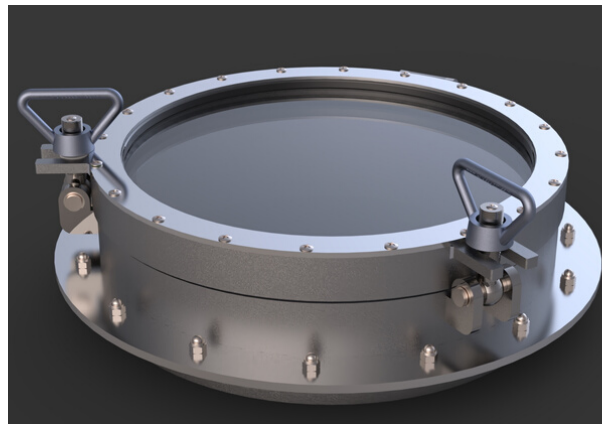
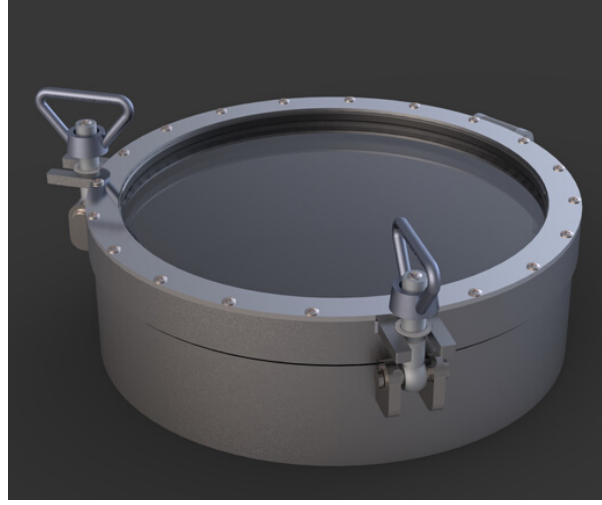


KARACA GEMİ

SHIP WINDOWS & PORTHOLES

OPENING PORTHOLE

opening side scuttles are designed mainly for mounting (welding or bolting) in hull. Side scuttles are designed according to ISO 1751.



FRAME MATERIAL

Steel
Stainless Steel
Aluminium Alloy
Brass

GLASS RETAINING FRAME

Steel
Stainless Steel
Aluminium Alloy
Brass

GLASS

Single
Laminated
Double Glazed
Bullet Proof
Sound Proof

ACCESSORY

Self Locking Tools

*portholes type C without storm covers

Nominal Size	Main Frame	Cut Out	Glass Thickness			Fasteners(Storm Cover)			Fasteners(Opening Frame)		
			Type A	Type B	Type C*	Type A	Type B	Type C*	Type A	Type B	Type C*
Di	Do	Dc	Type A	Type B	Type C*	Type A	Type B	Type C*	Type A	Type B	Type C*
200	248	252	10	8	6	2	2	N/A	2	2	2
250	298	302	12	8	6	2	2	N/A	3	2	2
300	358	362	15	10	8	3	2	N/A	3	2	2
350	408	412	15	12	8	3	3	N/A	3	3	3
400	458	462	19	12	10	3	3	N/A	3	3	3
450	508	512	25	15	10	3	3	N/A	4	4	3